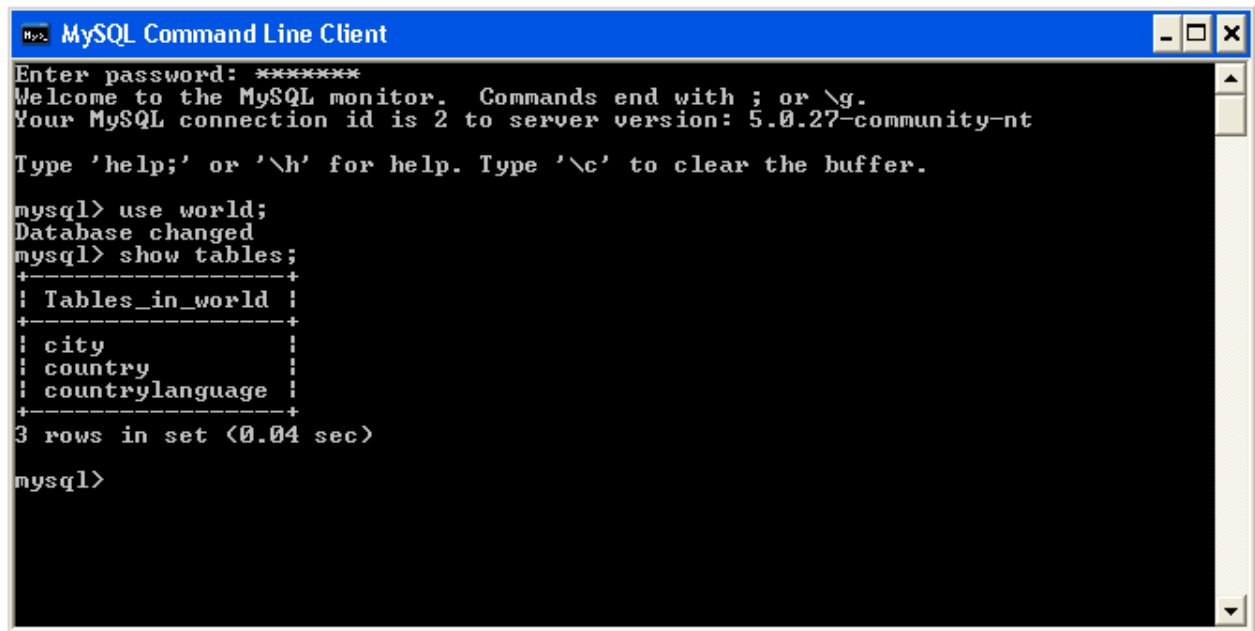


MySQL Tutorials

The MySQL tutorials are based on the World Database. This is a publically available database which is used for MySQL testing and demonstation. You can find out more about the World Database here

Before starting this tutorial, it is recommended you see the "Getting started with MySQL" section here.

It is assumed that the world database has been set up and and populated as follows



```
MySQL Command Line Client
Enter password: *****
Welcome to the MySQL monitor.  Commands end with ; or \g.
Your MySQL connection id is 2 to server version: 5.0.27-community-nt

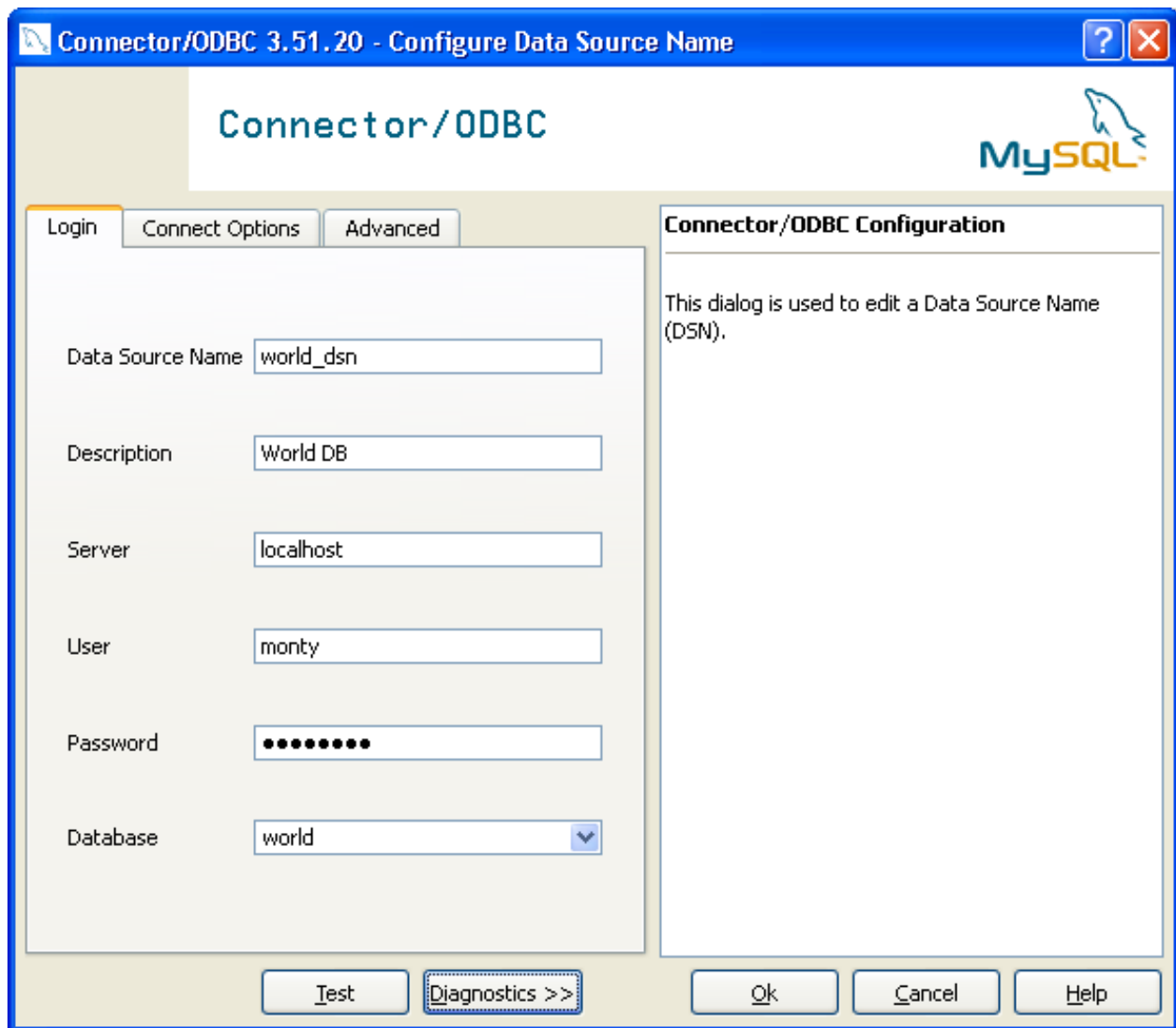
Type 'help;' or '\h' for help. Type '\c' to clear the buffer.

mysql> use world;
Database changed
mysql> show tables;
+-----+
| Tables_in_world |
+-----+
| city              |
| country           |
| countrylanguage  |
+-----+
3 rows in set (0.04 sec)

mysql>
```

It is also assumed that an ODBC System DSN called "world_dsn" has been set up as follows

We use the user `monty` to connect to our datasource, but in your instance the user might be different. In many cases, the `root` user ID is used.



Or on Linux, assuming you are using the unixODBC driver, the following information in your odbc.ini

```
[world_dsn]
Description      = The world database in mysql
Driver           = DriverMysql
Trace            = off
TraceFile        = stderr
Server           = localhost
Port             = 3306
Database         = world
UserName         =
Password         =
```

And this information in your odbcinst.ini

```
[DriverMysql]
Description      = ODBC for MySQL
Driver           = /usr/lib/unixODBC/libmyodbc3.so
Setup            = /usr/lib/unixODBC/libodbcmyS.so
UsageCount       = 1
```

For more information on setting up an ODBC System DSN, see this section

Finally, it assumed that the Web Service Discovery Wizard has been used to create 3 web services based on the 3 tables in the World database.

The screenshot displays the SOA Gateway Server Configuration interface. The top pane shows a table of WebServices:

L.	T.	WebService	DataSource Id	DataView
		world_dsn_city	odbcDsn=world_dsn, tableName=city	world_dsn_city
		world_dsn_country	odbcDsn=world_dsn, tableName=country	world_dsn_country
		world_dsn_countrylanguage	odbcDsn=world_dsn, tableName=countrylang...	world_dsn_countrylanguage

The bottom pane shows the 'WebService properties' for the selected 'world_dsn_city' resource:

WebService Properties

Name: world_dsn_city
DataView: world_dsn_city
Driver: My SQL Driver
Read-only:
WSDL URL is .. http://localhost:56000/world_dsn_city?WSDL

WebService Identification and options

odbcDsn: world_dsn
schemaName:
tableName: city

Now select a tutorial

- Using C#