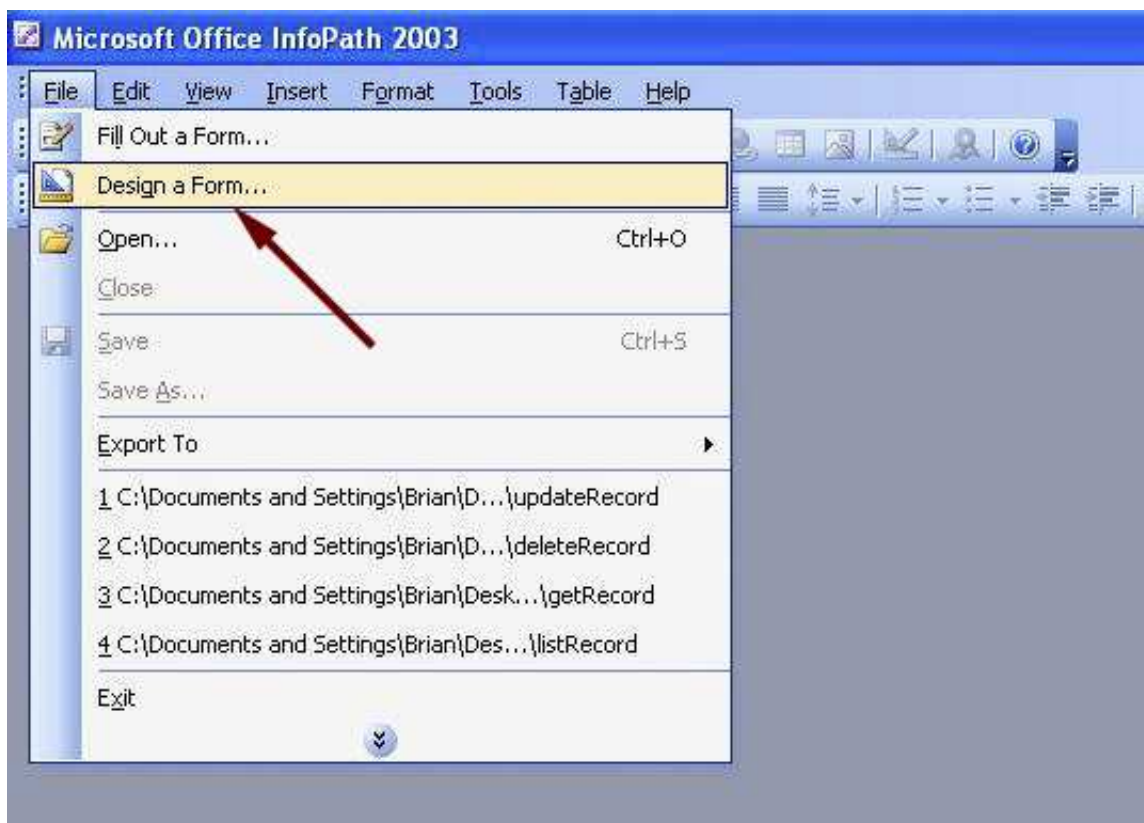


Accessing Adabas through Microsoft InfoPath

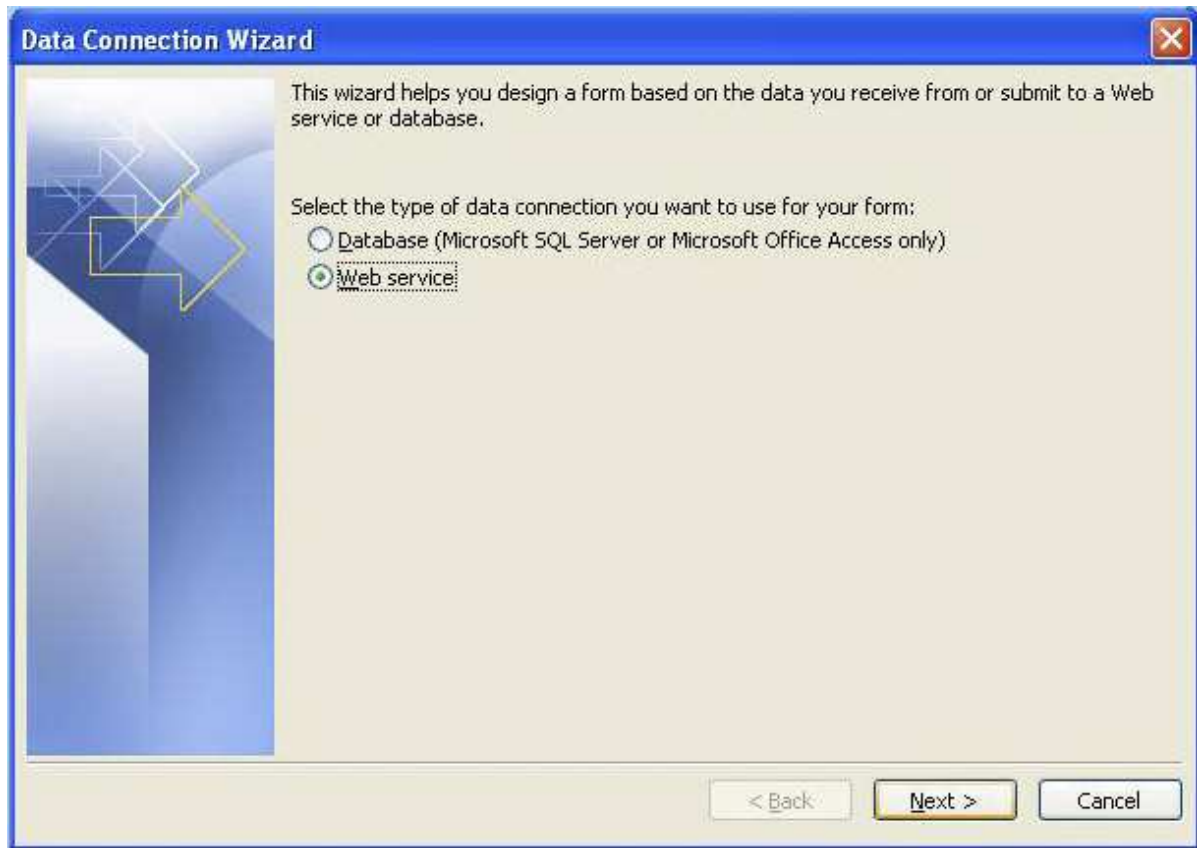
This tutorial demonstrates how to invoke operations on an Adabas DataSource exposed as a "Web service" through the SOA Gateway from Microsoft InfoPath.

1. From the InfoPath main menu bar, select **File -> Design a Form**.

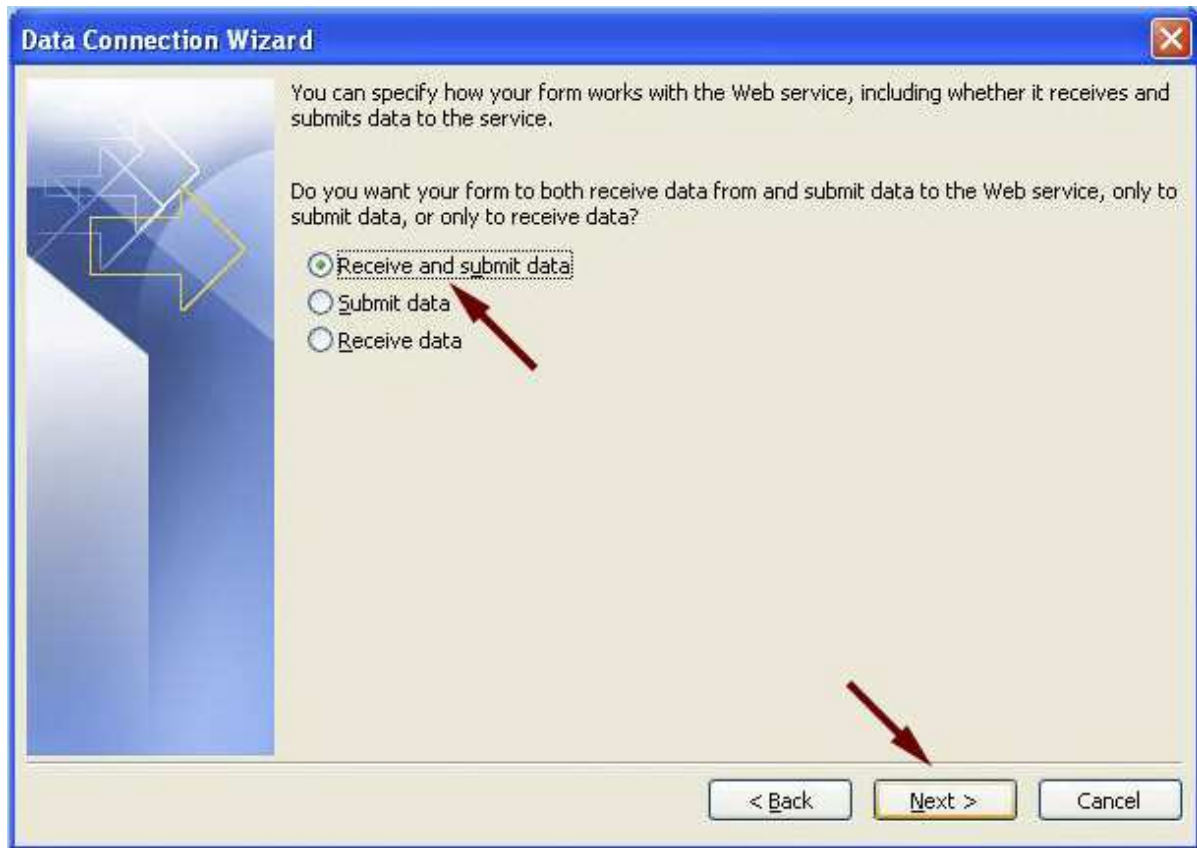


2. A panel will appear on your right hand side - choose **New** from **Data Connection**

This will start a dialog, first select **Web Service**, click **Next**



Select **Receive and submit data**, click **Next**

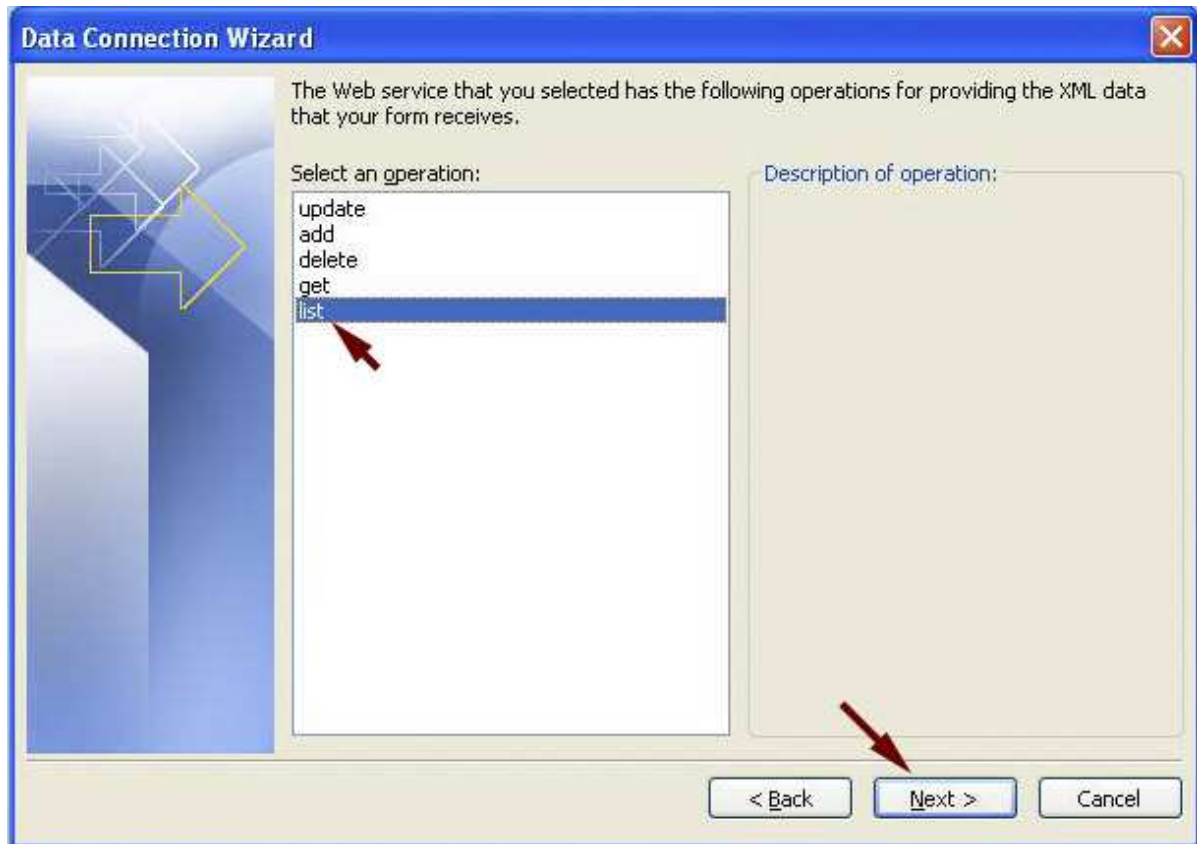


Enter the URL the WSDL for the "Employees" demo file is exposed as:
http://soagate:8885/adabas_Employees?WSDL

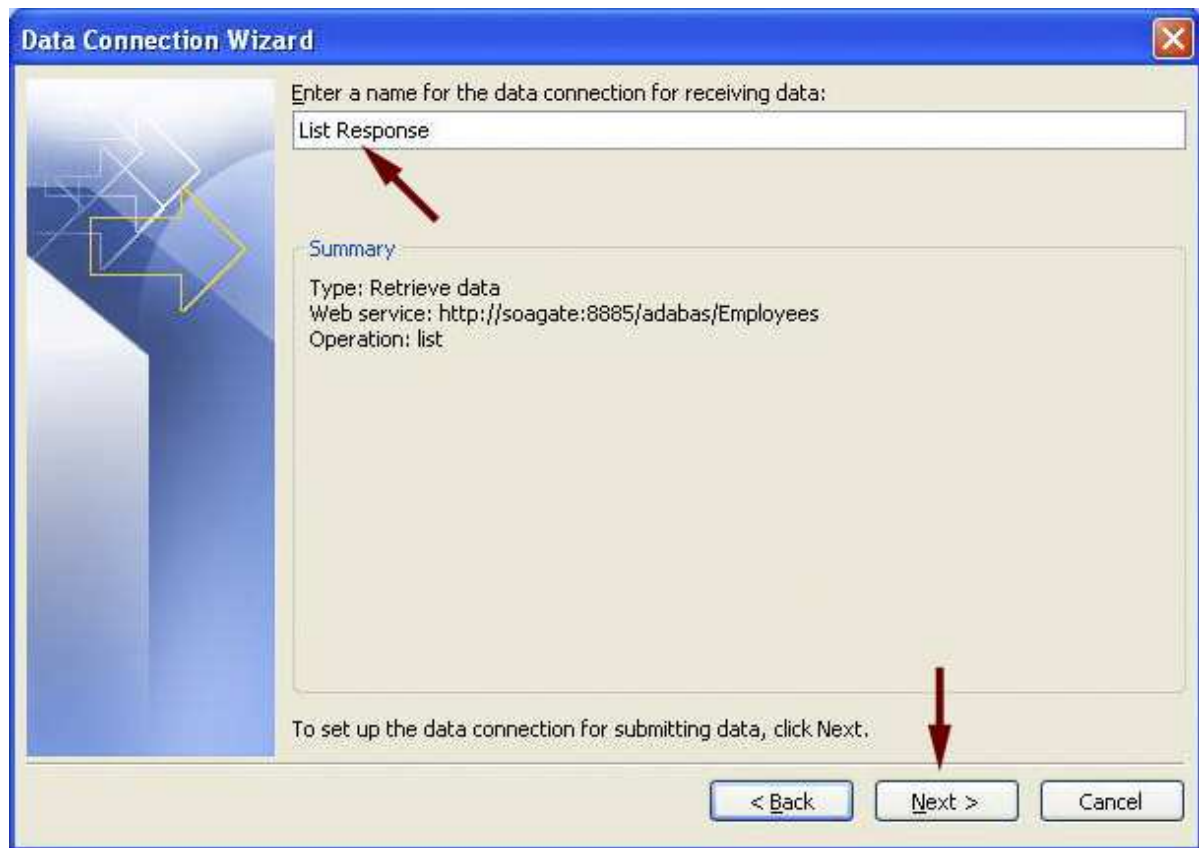
Click **Next**



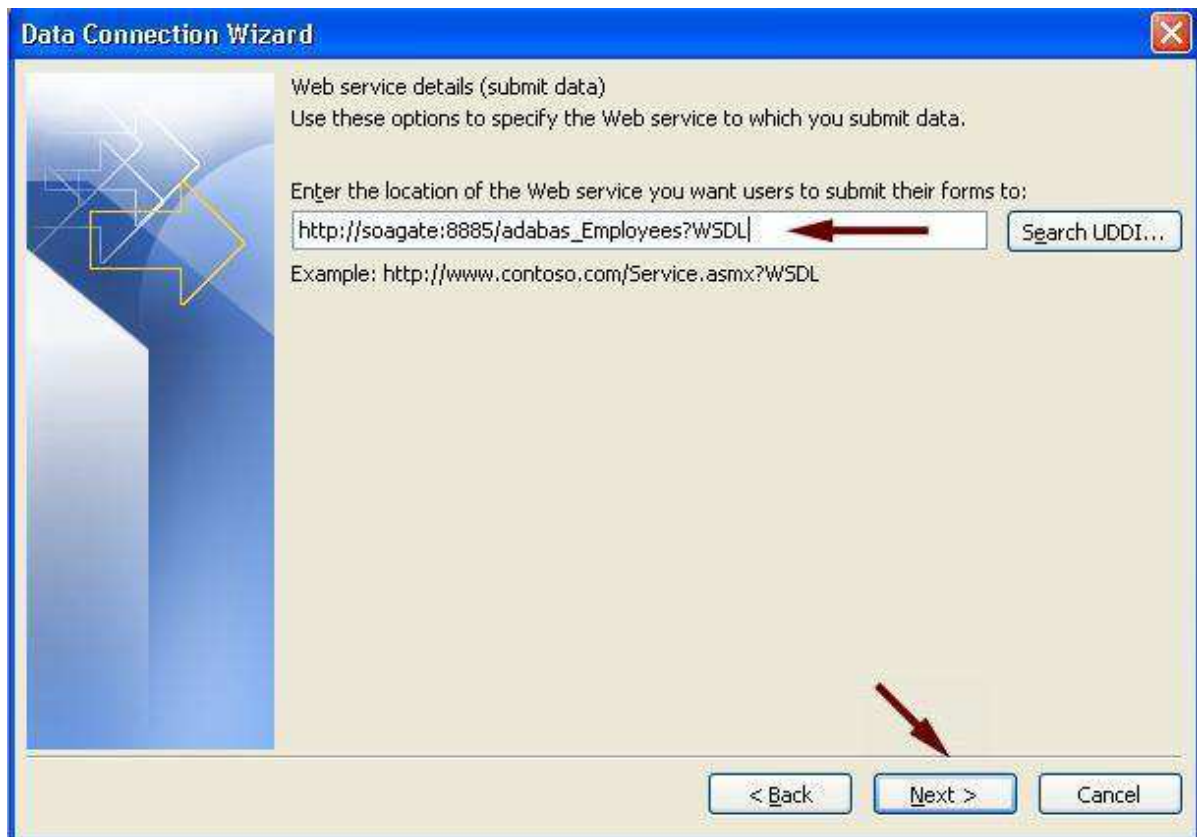
Select the **list** method, click **Next**



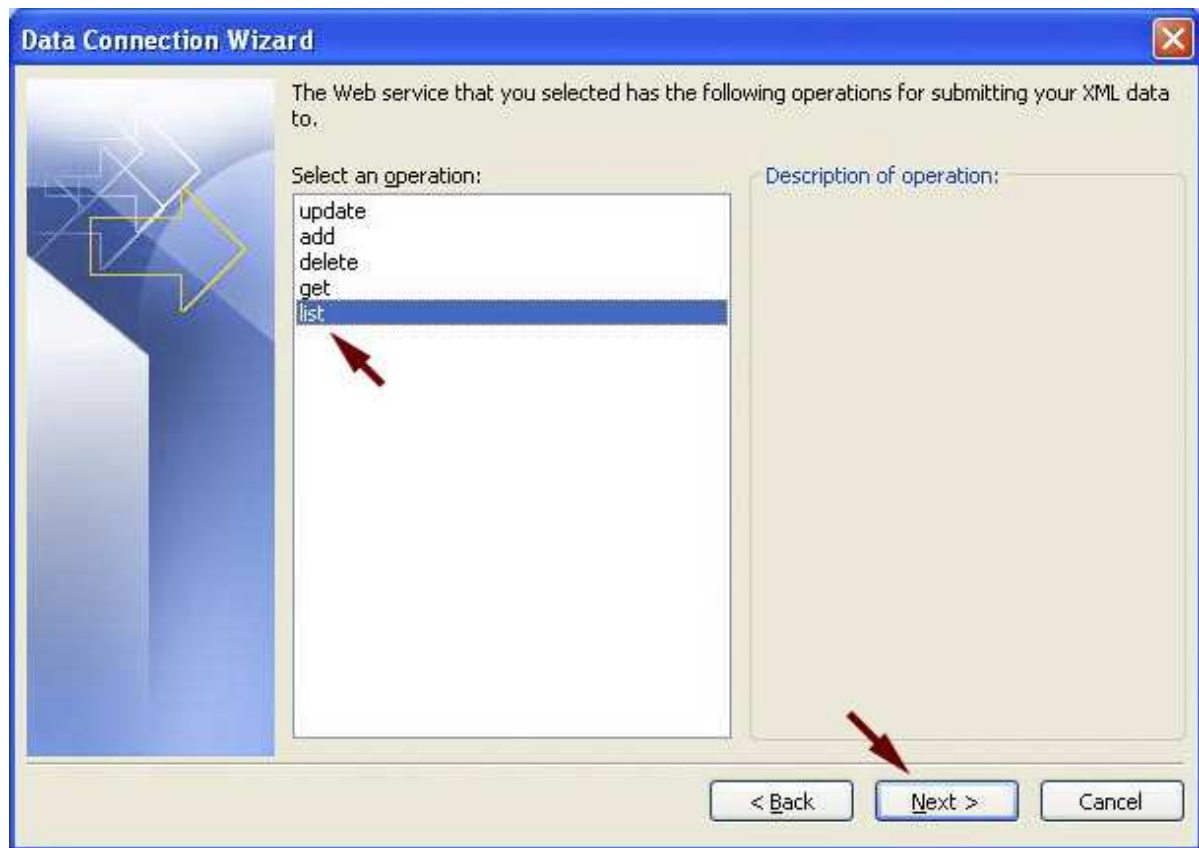
Assign a name to the response document, click **Next**



Enter the same URL again, click **Next**



Choose list and click **Next**



Select "Entire form (XML document....", click Next

Data Connection Wizard

The submit operation for the Web service requires the following parameters. Specify which fields or groups in your form provide the data for these parameters. If the Web service parameter requires an entire XML document, you can specify that as well.

Parameters:

Parameter	Type	Element
:personnel_id	string	/
:name	string	
:city	string	

Parameter options

Submit the following data for the selected parameter:

Field or group:

Include:

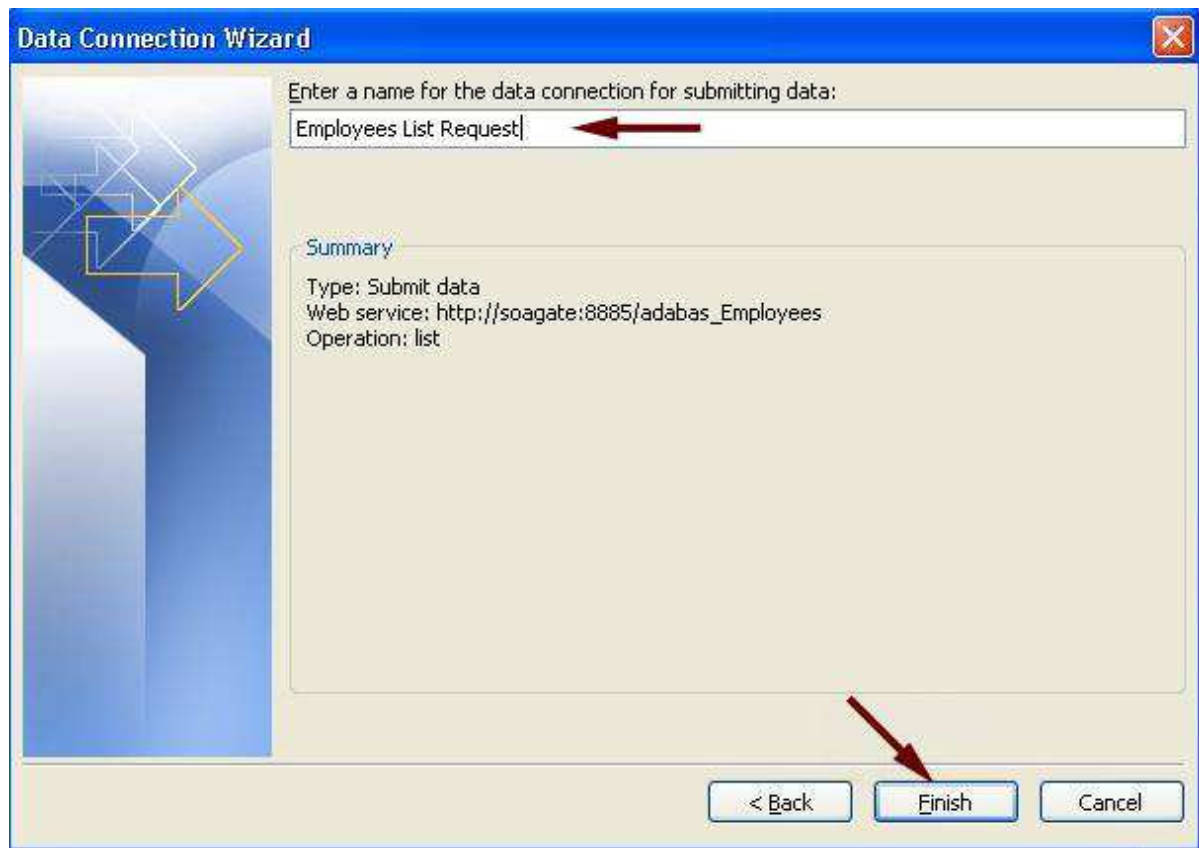
Entire form (XML document, including processing instructions):

Submit data as a string

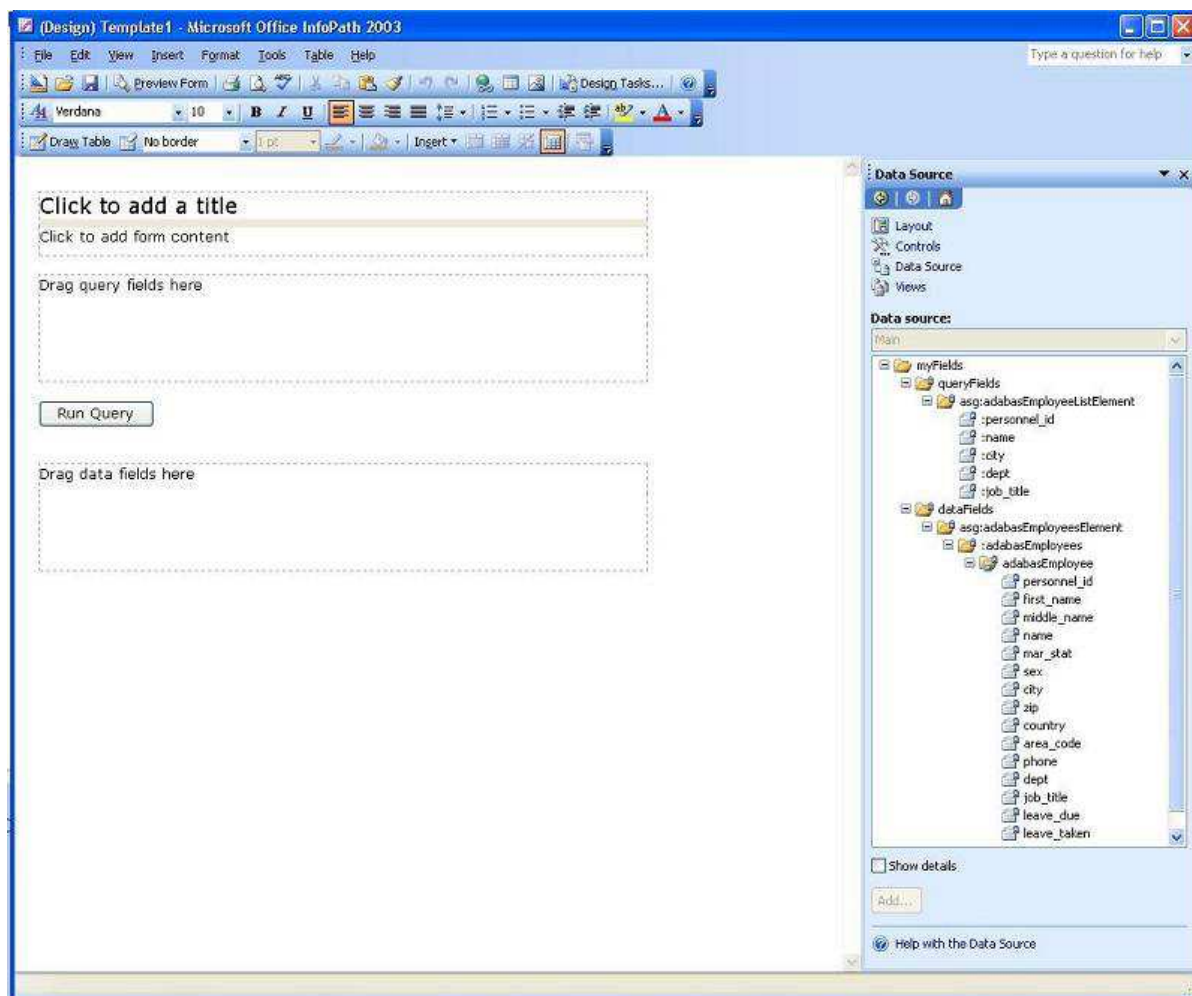
Note: Digitally signed data must be submitted as a string to preserve white spaces.

< Back Next > Cancel

Assign a name to the Send Connection, click **Finish**



3. You will now be presented with a form



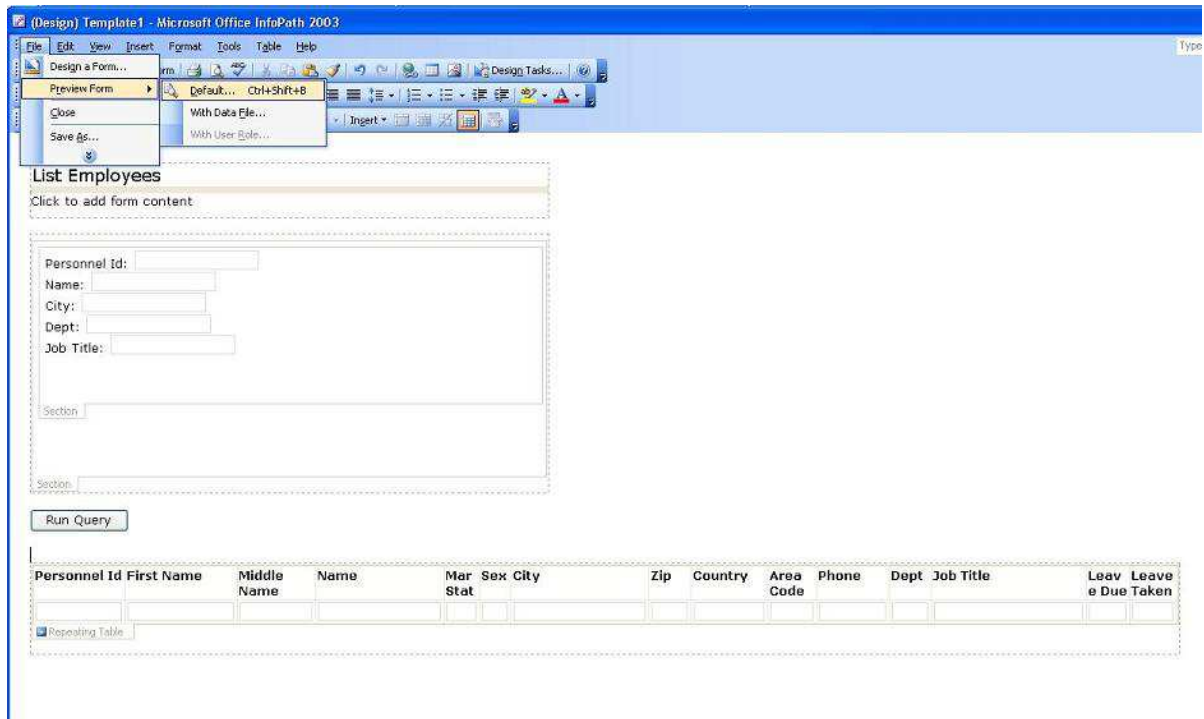
Do the following:

- Enter a title "List Employees" for example
- Expand the **queryFields**, drag them to the area "Drag query fields here"
- Expand the **dataFields**, right-click on the **adabasEmployee** element. Now drag the adabasEmployee to the area "Drag data fields here", insert it as a **Repeating table**

At this point, it might make sense to resize the table and the fields in the "repeating table"



4. Once you are happy with how your form looks like, select **File -> Preview form -> Default**



5. You will be presented with a form, enter 4000004* in the Personnel Id field and send the request to the server

List Employees

Personnel Id:

Name:

City:

Dept:

Job Title:

6. Your table will now be populated with the data based on your request:

Personnel Id	First Name	Middle Name	Name	Mar Stat	Sex	City	Zip	Country	Area Code	Phone	Dept	Job Title	Leave Due	Leave Taken
40000001	HANS	ERIK	JENSEN	W	M	KOEBENHAVN	1800	DK	01	215161	ADMA	SEKRETAER	30	25
40000007	CLAUS	JESPER	JENSEN	S	M	VALBY	2500	DK	01	465800	SYSA	PROGRAMMOER	30	13
40000012	NIELS	CHRISTIAN	HANSEN	D	M	KOEBENHAVN	1364	DK	01	111122	ADMA	REVISOR	30	15
40000014	KARL		SOERENSEN	M	M	KOEBENHAVN	2200	DK	01	370252	SYSA	PROGRAMMOER	30	18
40000037	JONAS	KIM	ERIKSEN	S	M	KOEBENHAVN	1019	DK	01	132526	SYSA	DB-ADMINISTRATOR	30	20
40000038	ANITA	KARINA	ANDERSEN	S	F	KOEBENHAVN	1850	DK	01	316510	SALG	SEKRETAER	30	18
40000042	KARSTEN		FREDERIKSEN	S	M	SØBORG	2860	DK	01	561519	SYSA	SYSTEMCHEF	30	22
40000043	ELIN	GRETE	GREGENSEN	M	F	ODENSE	5000	DK	09	101211	SALG	SAELGER	30	20
40000044	KARIN	MARIE	ANDERSEN	M	F	VANLØESE	2720	DK	01	743919	SYSA	PROJEKTSKRETAER	30	19
40000045	HANS	OLE	MADSEN	D	M	KOEBENHAVN	1609	DK	01	938106	MASK	OPERATOER	30	22
40000100	HANNE	IRENE	HANSEN	M	F	VALBY	2500	DK	01	463149	SYSA	PROGRAMMOER	30	20
40000107	JOHNNY		BENTSEN	M	M	BROENDBY STR	2660	DK	02	541019	MASK	OPERATOER	30	12
40000110	PREBEN		PETERSEN	S	M	HVIDOVRE	2650	DK	01	471719	ADMA	EFG-ELEV	30	14
40000112	FINN		HOLGENSEN	M	M	KOEBENHAVN	2300	DK	01	548959	SYSA	PROGRAMMOER	30	16
40000114	SUSANNE	BENTE	RASMUSSEN	S	F	FREDERIKSBERG	2000	DK	01	244950	SYSA	SEKRETAER	30	14
40000124	HANS	EMIL	PETERSEN	M	M	ROEDOVRE	2610	DK	02	910206	SALG	SAELGER	30	16