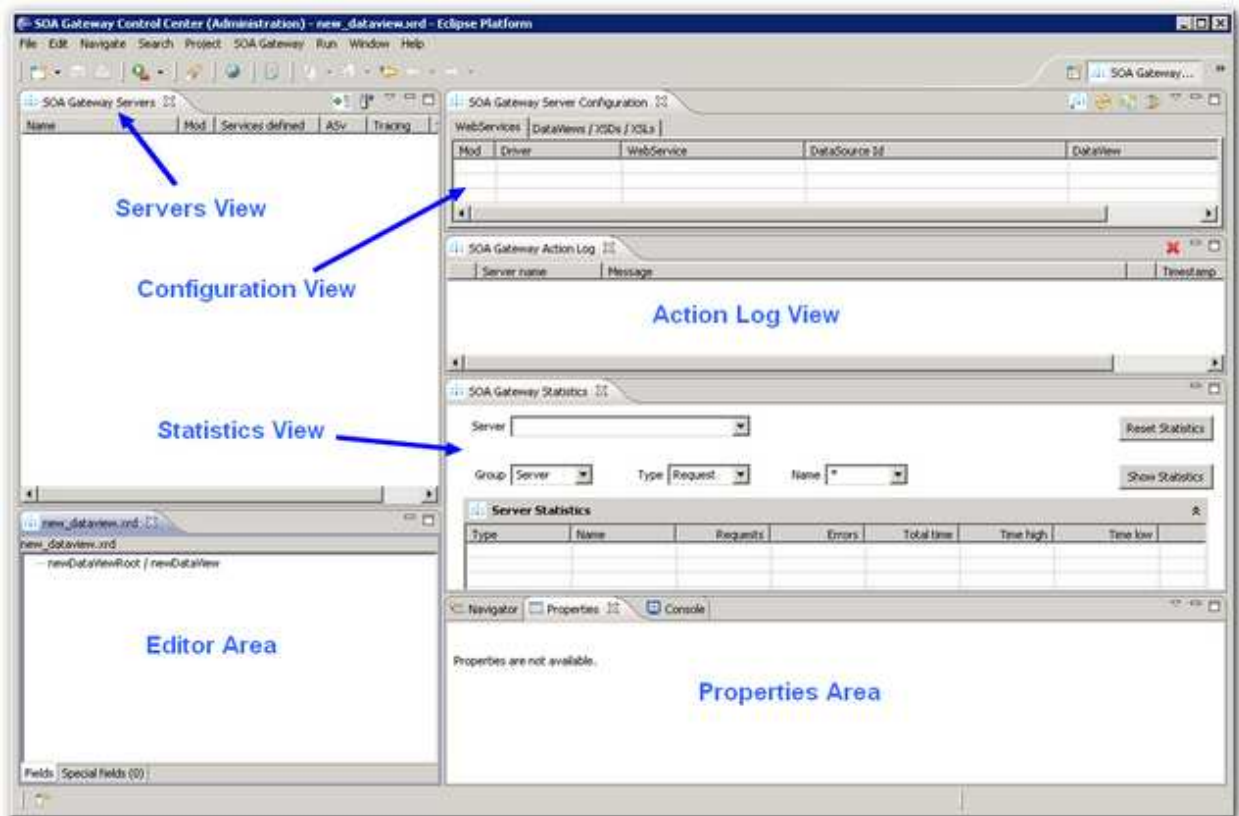


# SOA Gateway Control Center

This section describes how to work with the SOA Gateway Control Center. This is the client tool used for administrating one or more SOA Gateway server(s).

The following sections will explain the individual 'views' available to the administrator, and how to work with each.

- The Servers View
- The Configuration View
- The Action Log View
- The Statistics View



Other aspects:

- The SOA Gateway "DataView"
- Setting Preferences