

Creating a SYSOBJH extract file

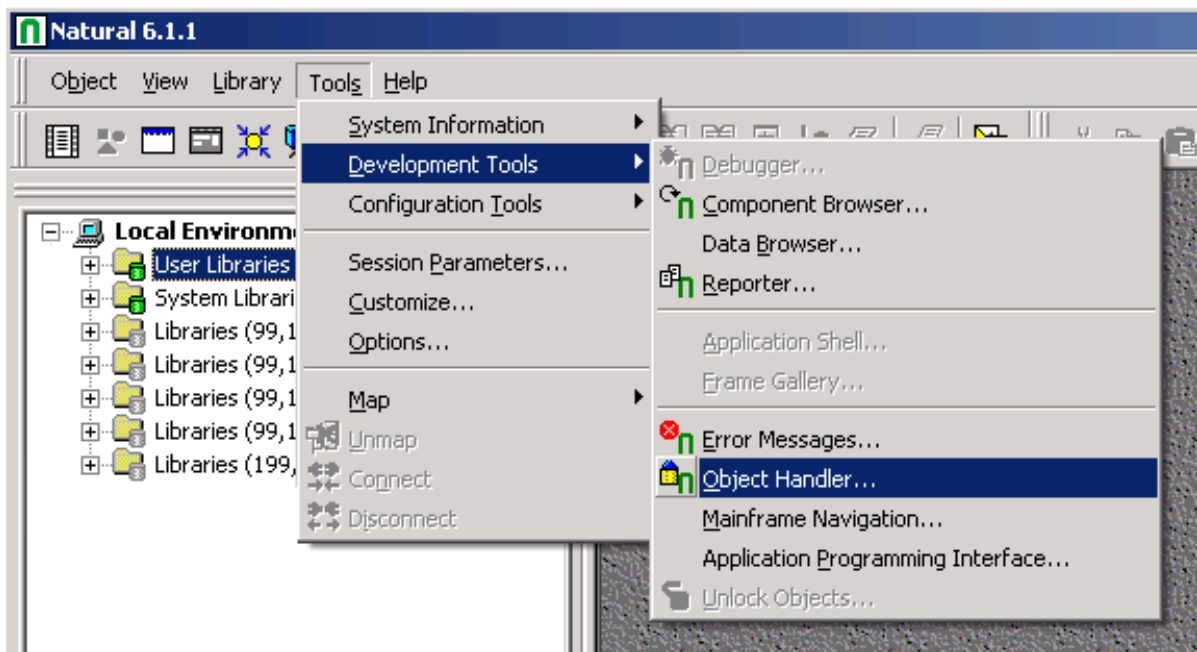
Adabas DataView(s) can be generated from DDM(s)

Natural DataView(s) from PDA(s) in a SYSOBJH extract file.

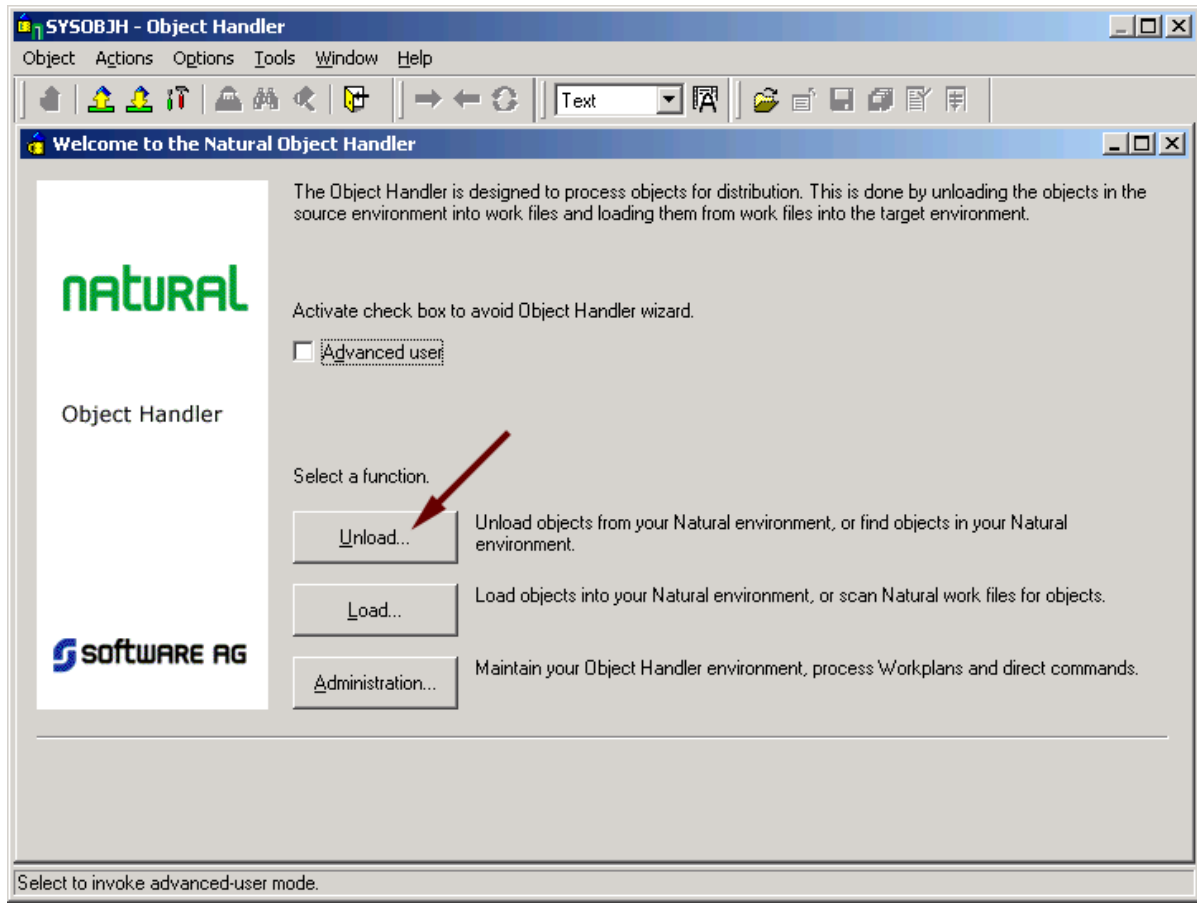
Step-by-step instructions on how to create a SYSOBJH extract file are given for Windows and Mainframe platforms.

Generating a SYSOBJH extract (Windows)

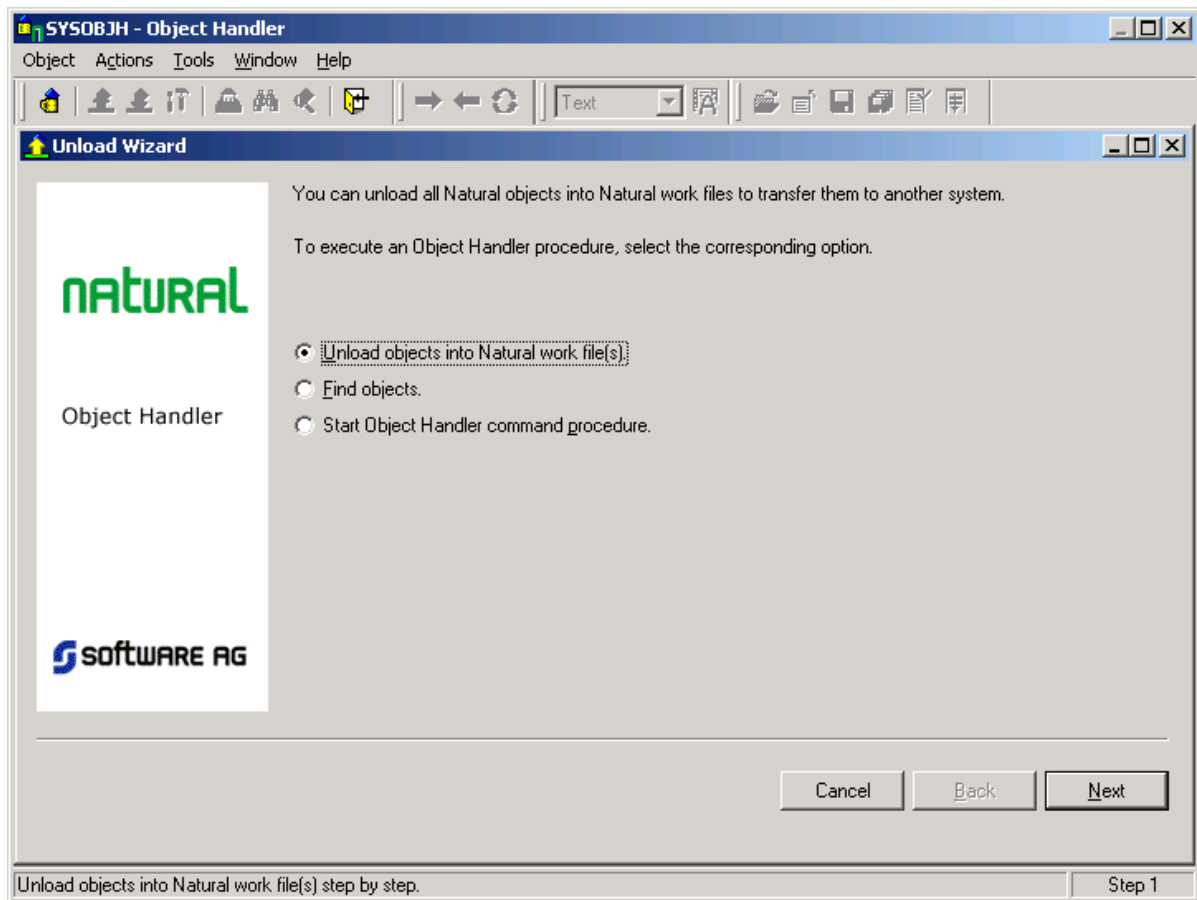
1. Start Natural, from the **Tools** menu bar select **Development Tools**", then select **Object Handler**.



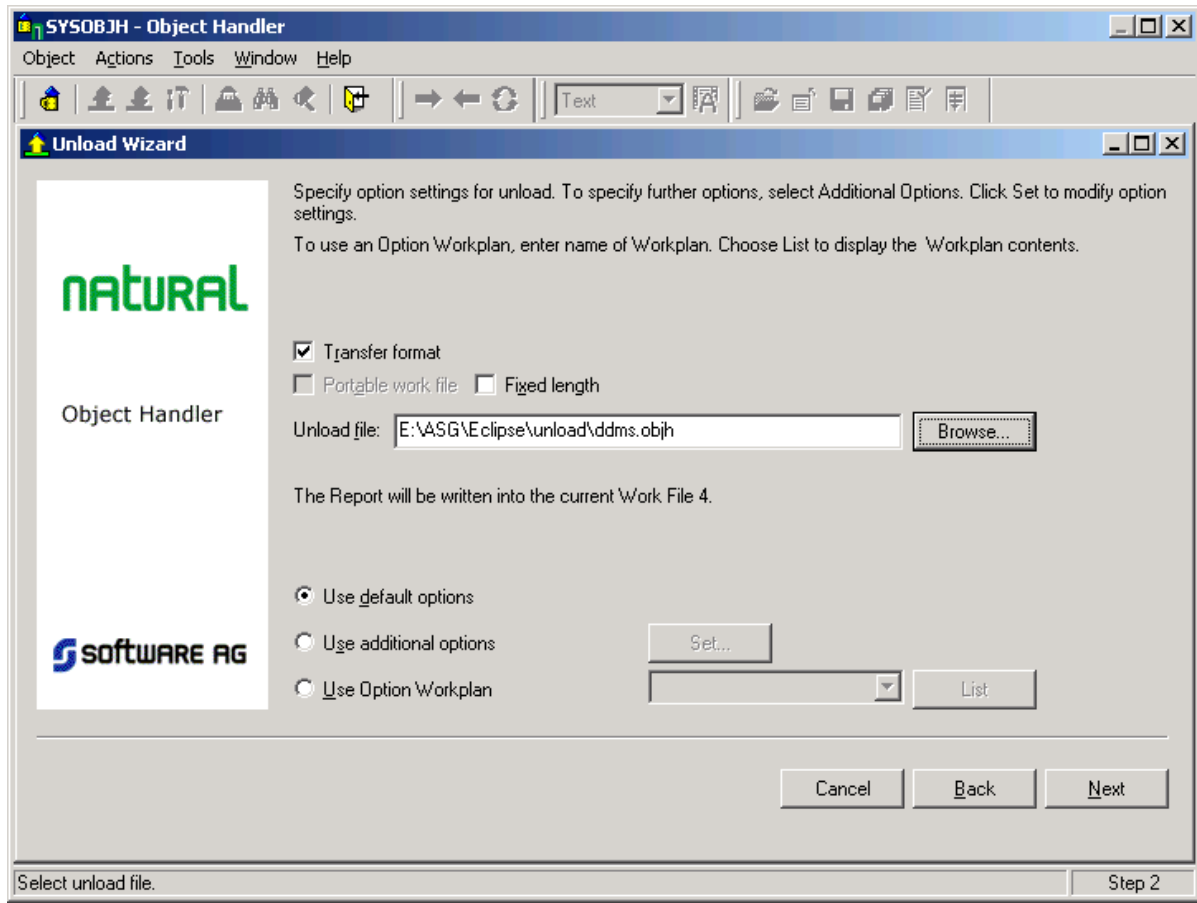
2. Click the **Unload** button to start the Unload Wizard.



3. Check the **Unload objects into Natural work file(s)** radio button. Click **Next**.

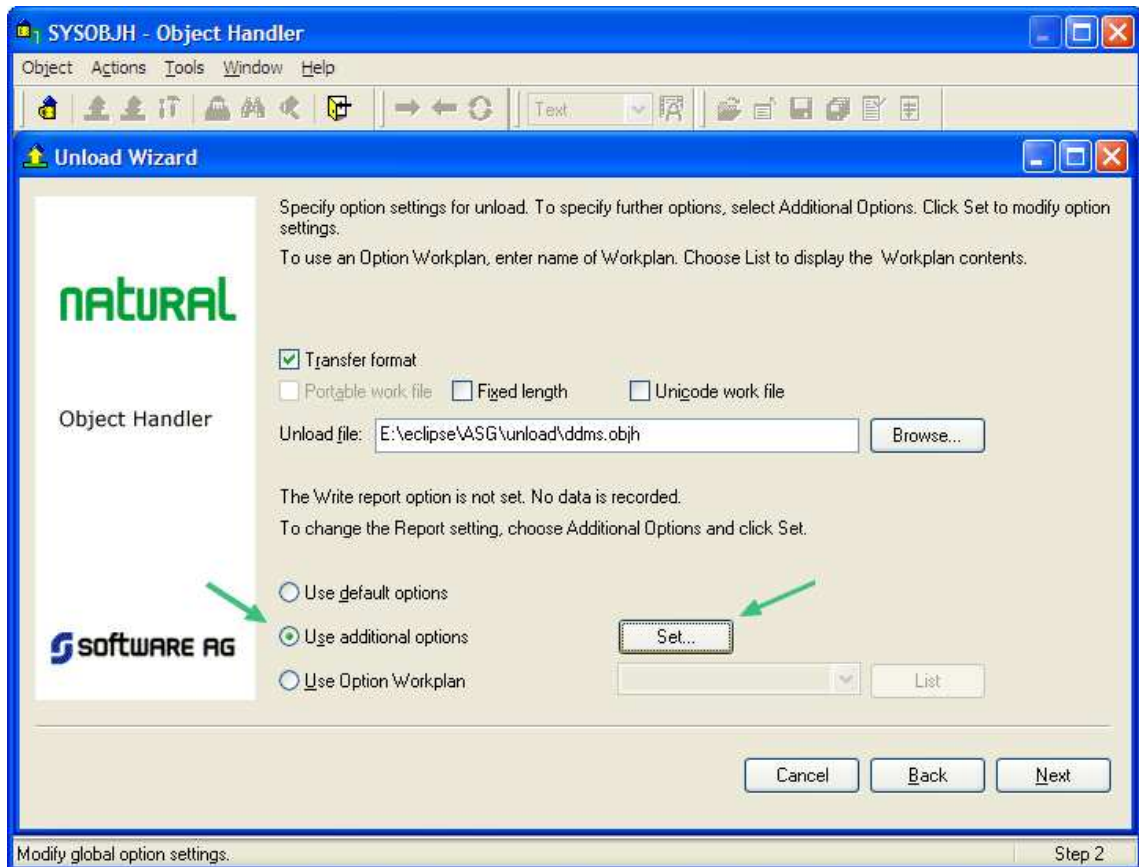


4. Select the **Transfer format** check box, enter the location to which you want the files to be unloaded in the Unload file text box (or click the **Browse** button to bring up a folder/file selection dialog). Click **Next**.

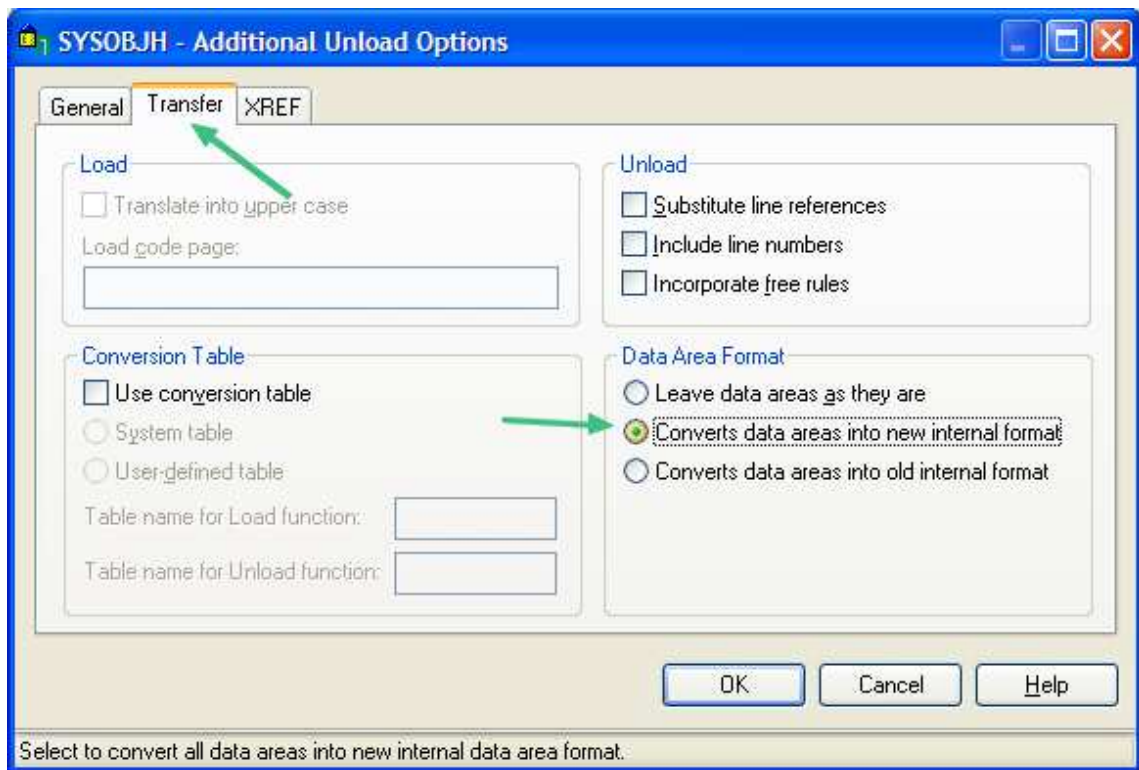


5. When generating an OBJH extract including PDAs, it is essential to set the following:

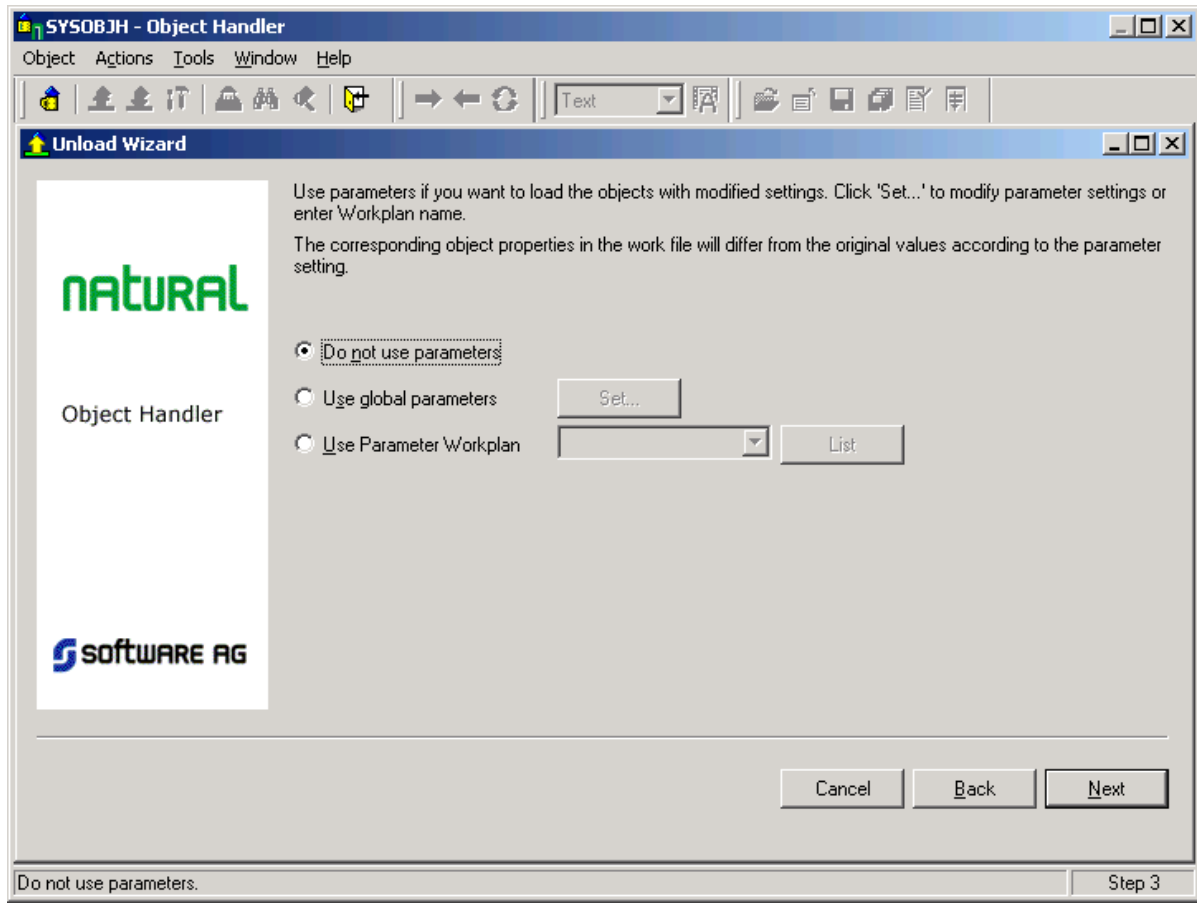
- Check "Use additional options" and click the "Set...:" button



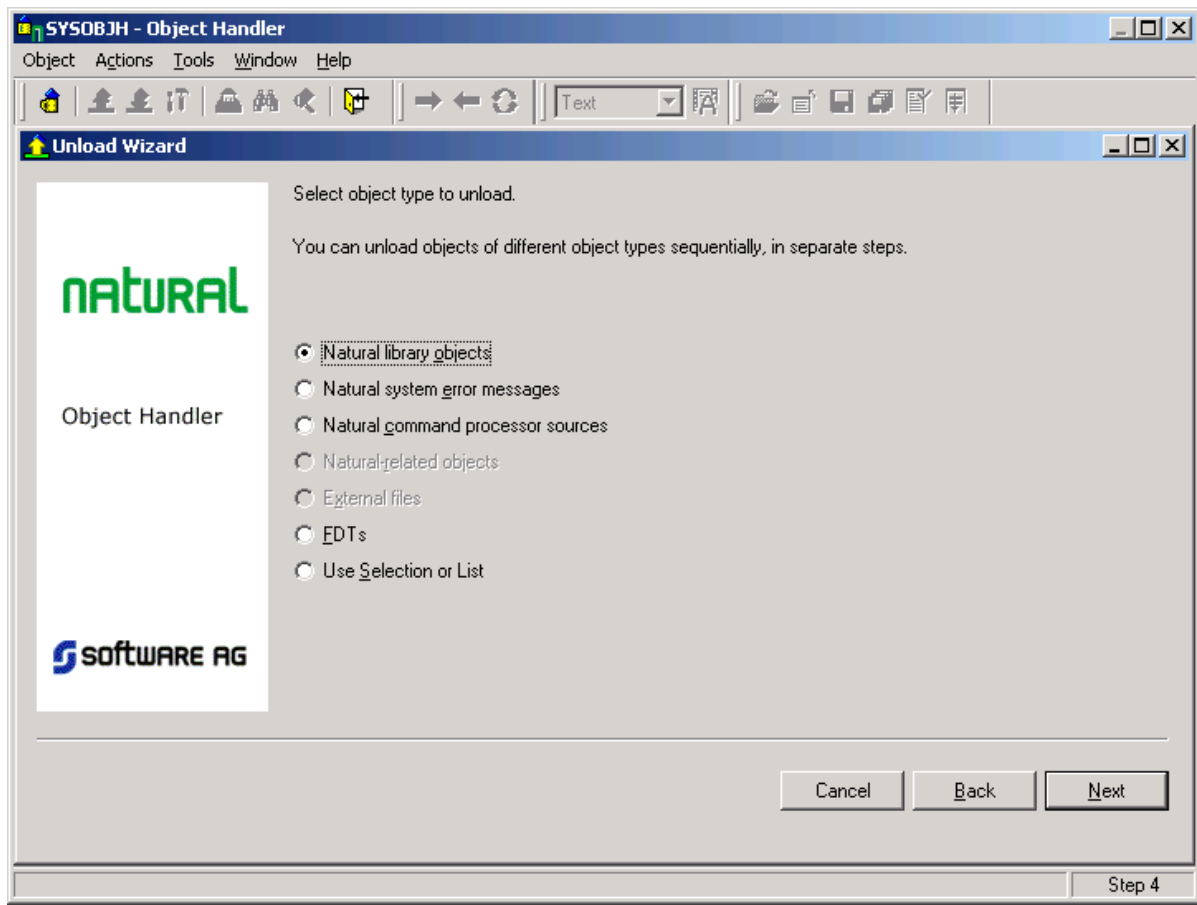
- Select the "transfer" tab and check the "Converts data areas into new internal format", then click "OK"



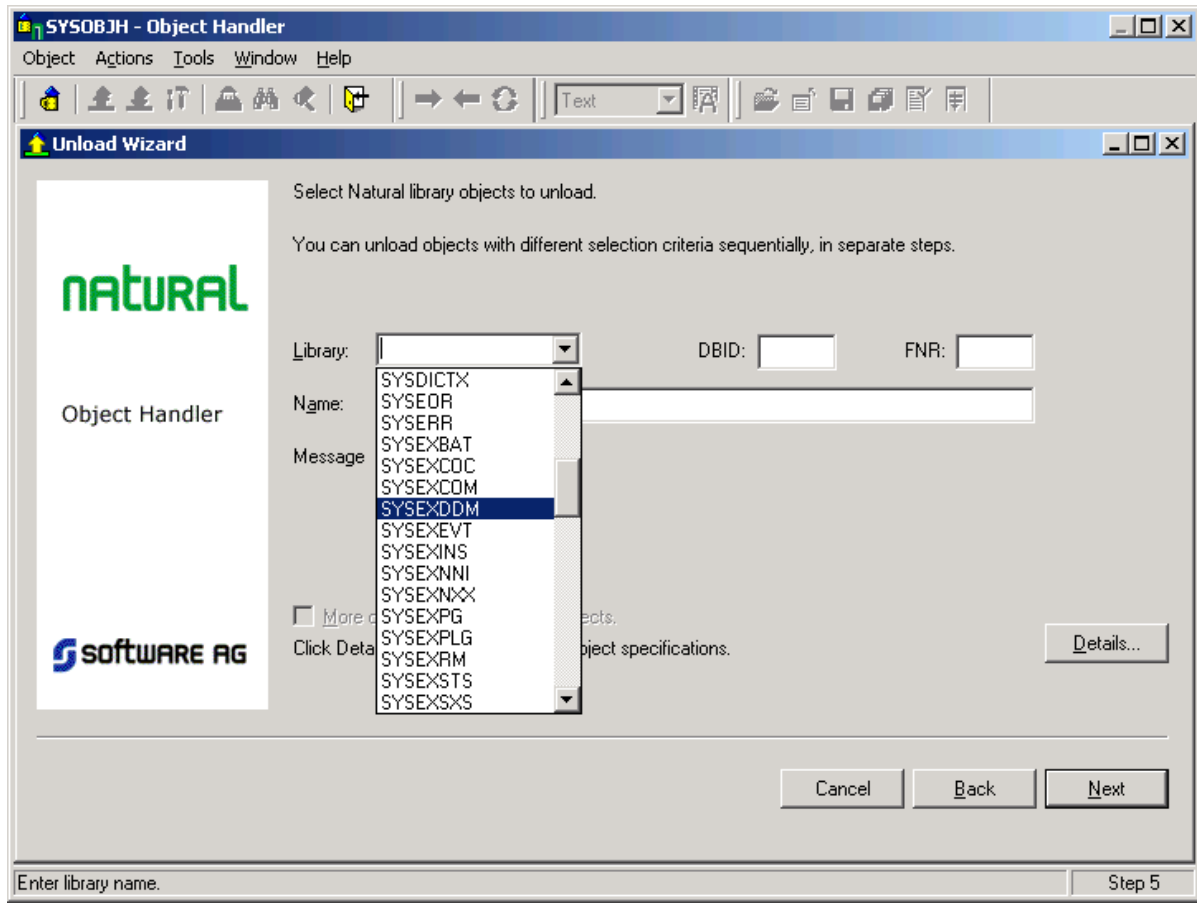
6. Select the **Do not use parameters** radio button, click **Next**.



7. Select the **Natural library object** radio button, click **Next**.



8. Select the Library containing your DDM definitions (e.g. SYSEXDDM) from the Library list box, then click the **Details** button. If you also enter a specific DBID and/or FNR, only the relevant DDMs are selected, otherwise all valid DDMs are returned.



9. In the Unload Wizard details window, first click the **Deselect All** button to deselect all Natural Object Types, then select **DDM** and/or **PDA** . Click the **OK** button to return to the Unload Wizard.

SYSOBJH - Unload Wizard

Location
Library:
DBID: FNR:

Object Types
 Natural programming objects
 Error messages
 Shared resources

Objects
Name: S/C-Kind:

Natural Object Types

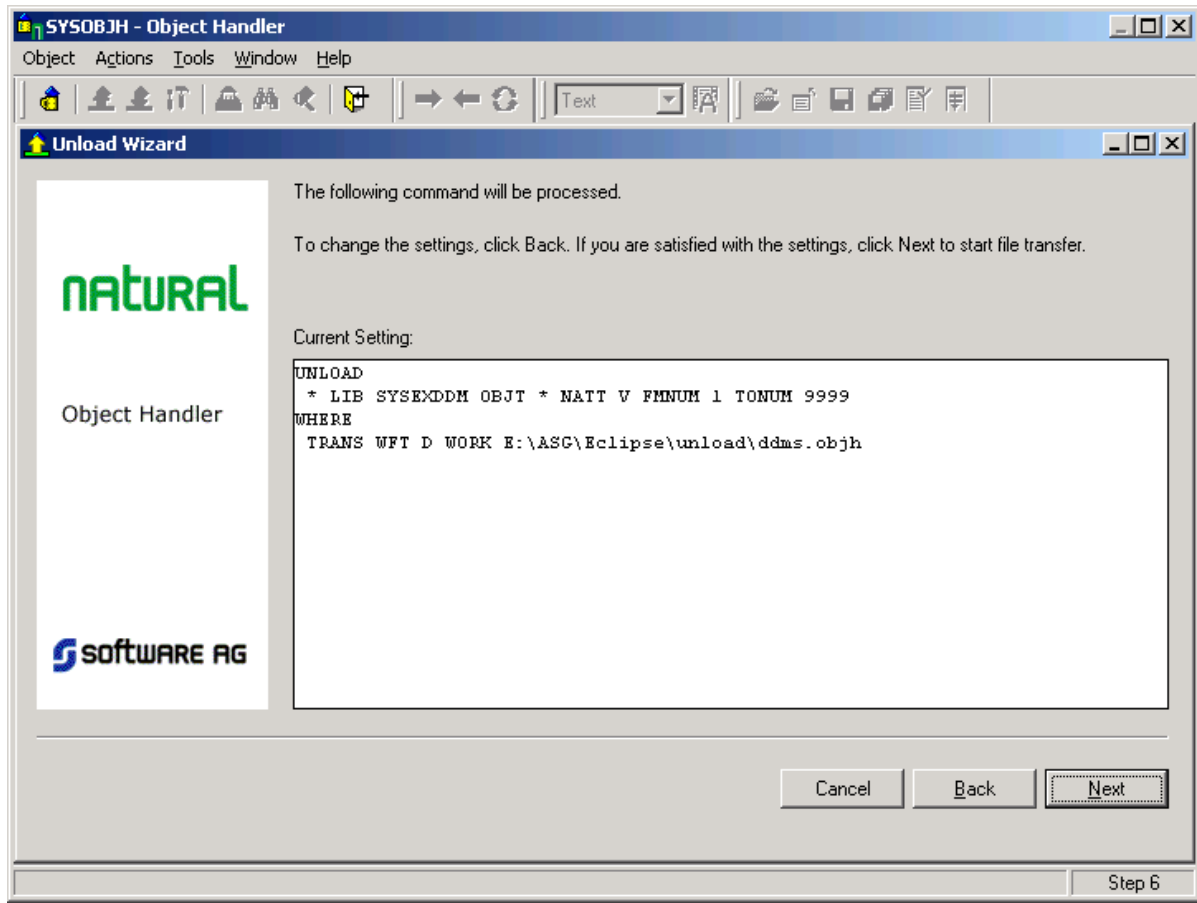
<input checked="" type="checkbox"/> DDM	<input type="checkbox"/> Program	<input type="checkbox"/> Copycode	<input type="checkbox"/> Class
<input type="checkbox"/> LDA	<input type="checkbox"/> Subroutine	<input type="checkbox"/> Text	<input type="checkbox"/> NCP
<input type="checkbox"/> PDA	<input type="checkbox"/> Subprogram	<input type="checkbox"/> Dialog	<input type="checkbox"/> Object View
<input type="checkbox"/> GDA	<input type="checkbox"/> Helproutine	<input type="checkbox"/> Map	<input type="checkbox"/> Function

User-defined Messages
from to S/L-Kind: Language codes:

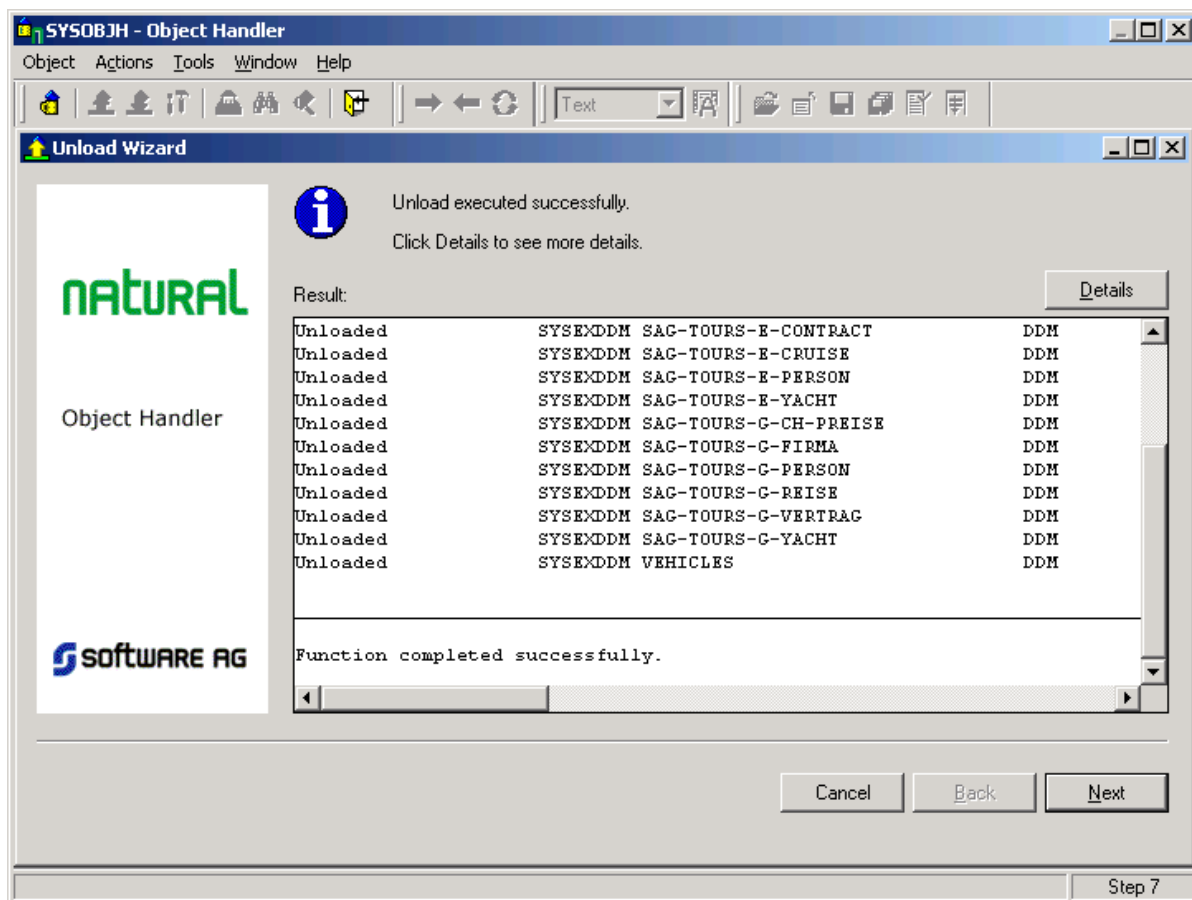
Extras
 Use object properties (user ID, date, ...) for selection.
 Define exception criterion for selection.

Enter library name.

10. The generated Unload command is shown. Click the **Next** button to start the actual unload process.

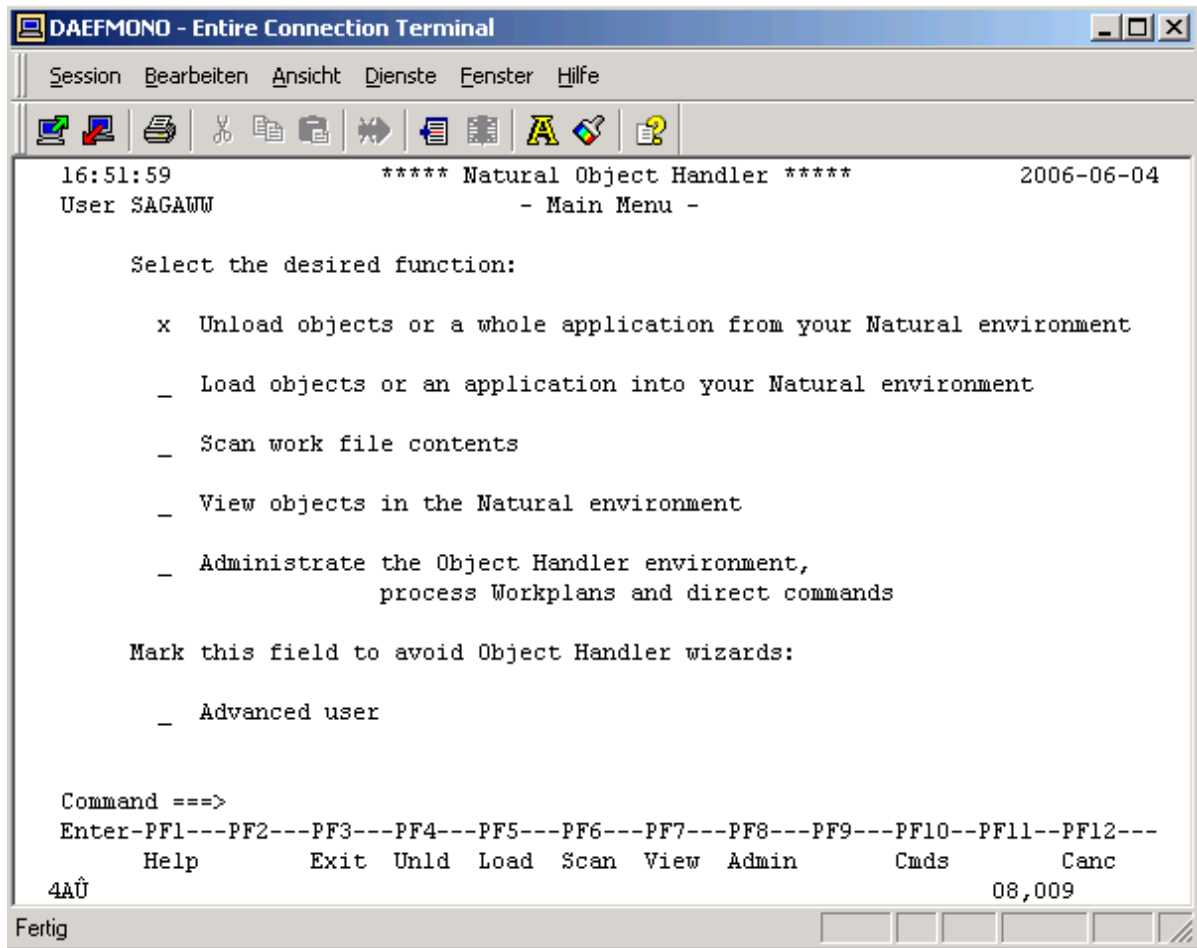


11. The status of the unload is shown. If it was successful, a file is created under the path and file name specified. Click the **Next** button to complete the unload, close the SYSOBJH wizard.

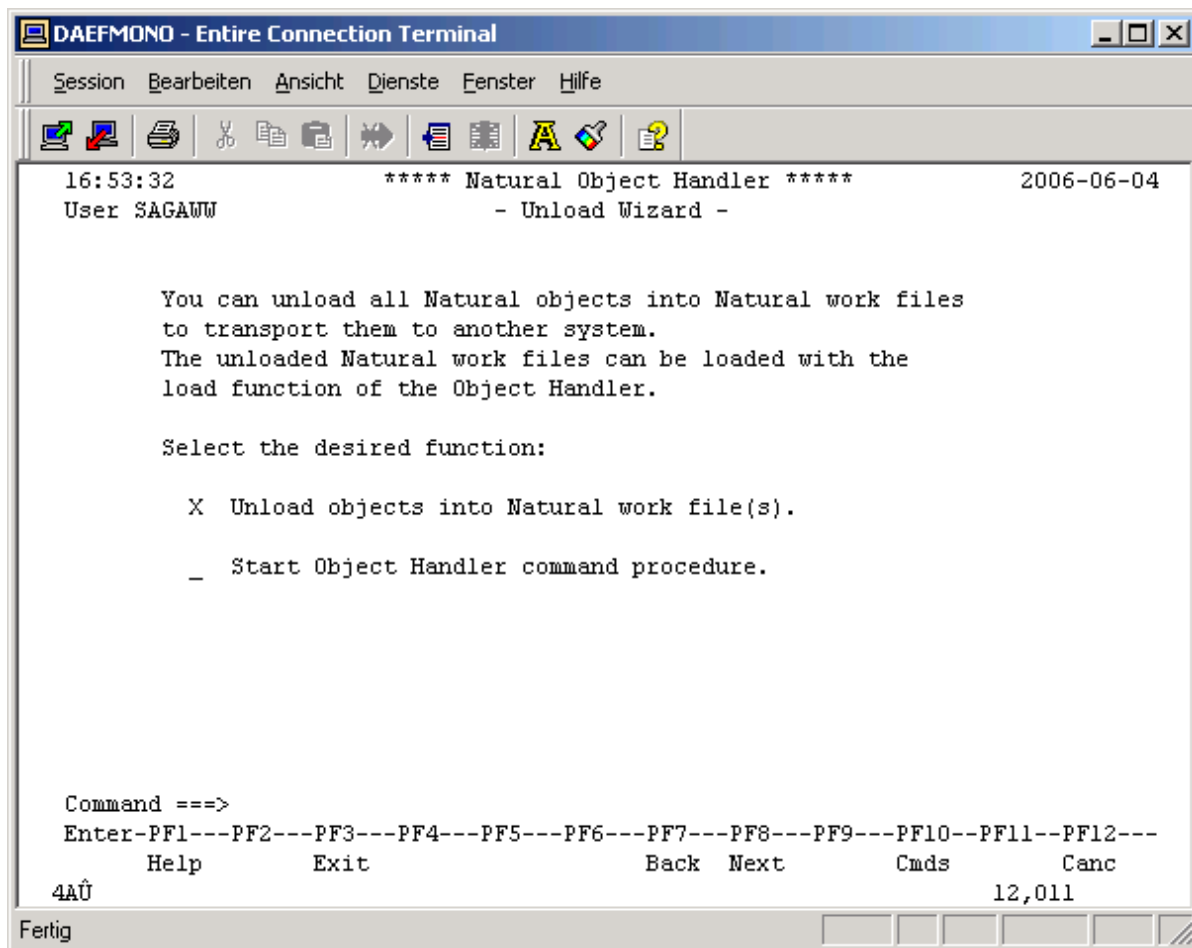


Generating a SYSOBJH extract (Mainframe)

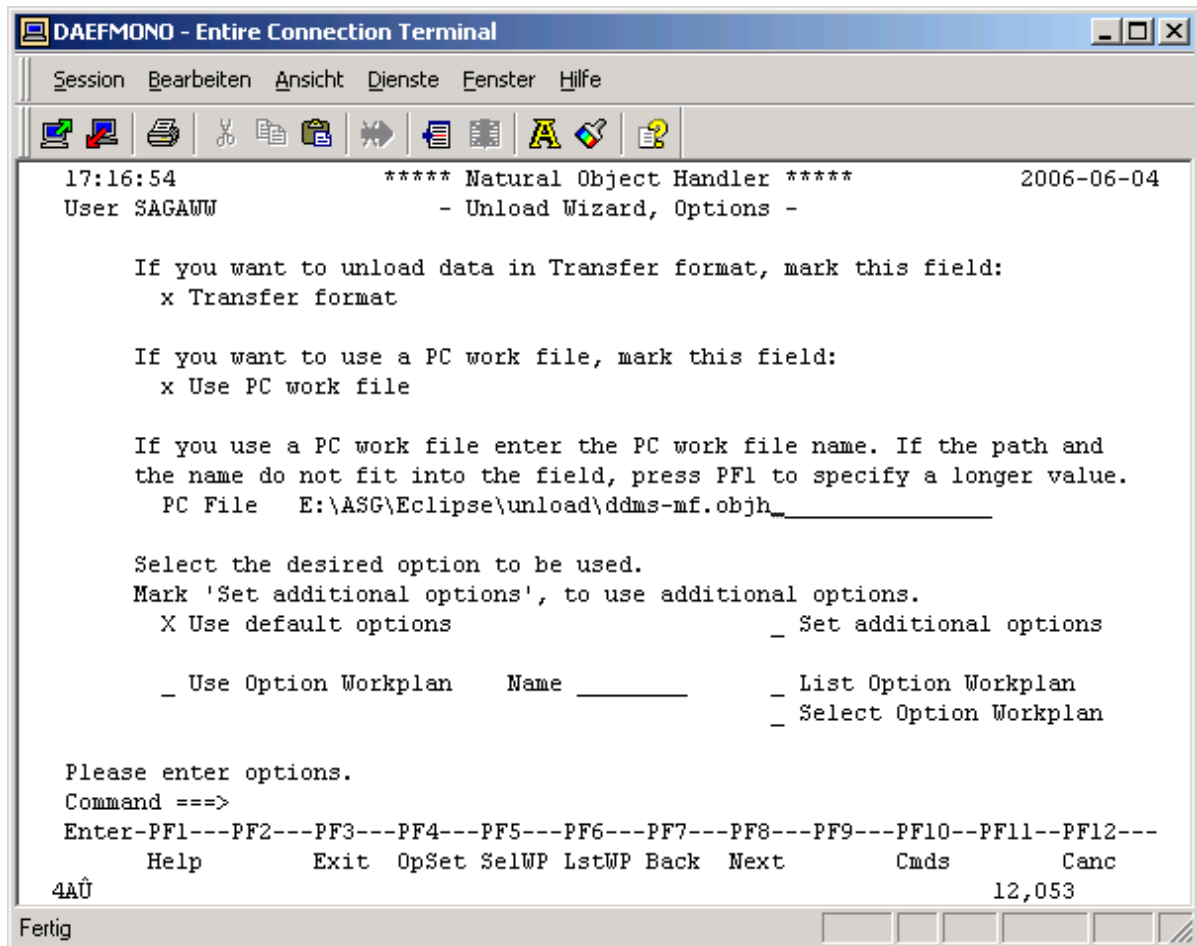
1. Start Natural, enter the command SYSOBJH to start the Natural Object Handler.
2. Select the **Unload** function to start the Unload Wizard.



3. Check **Unload objects into Natural work file(s)** radio button.

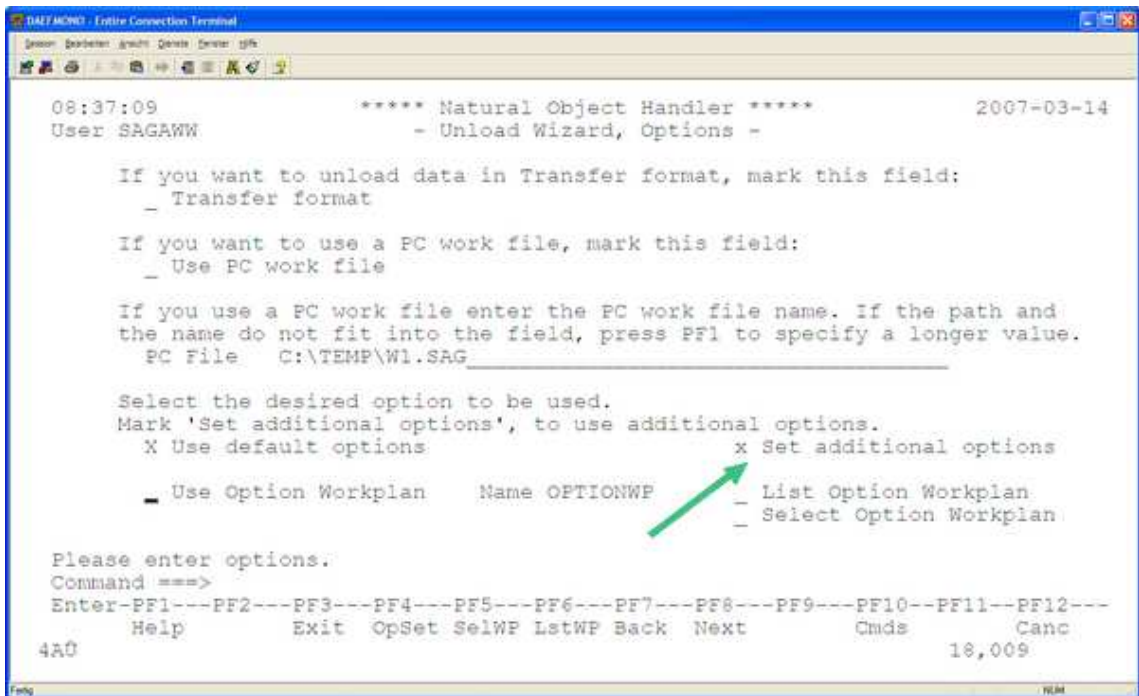


4. Select Transfer format, this example uses Entire Connection to transfer the unload file to your PC, enter the location to which you want the files to be unloaded in the PC File input field.

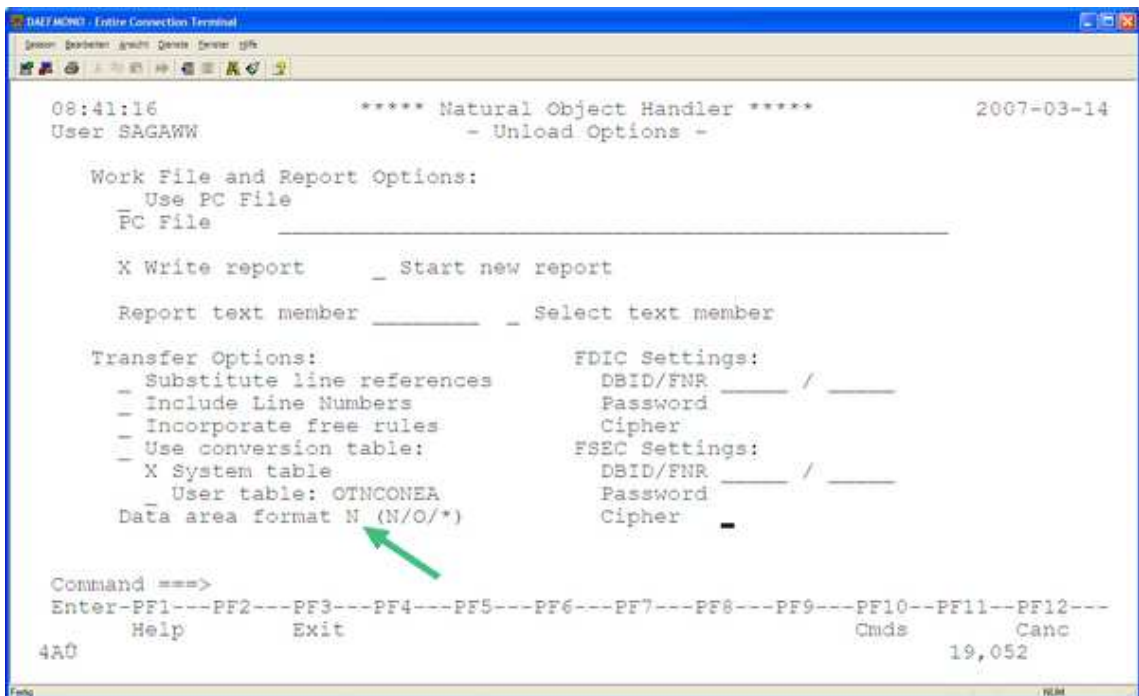


5. When generating an OBJH extract including PDAs, it is essential to set the following:

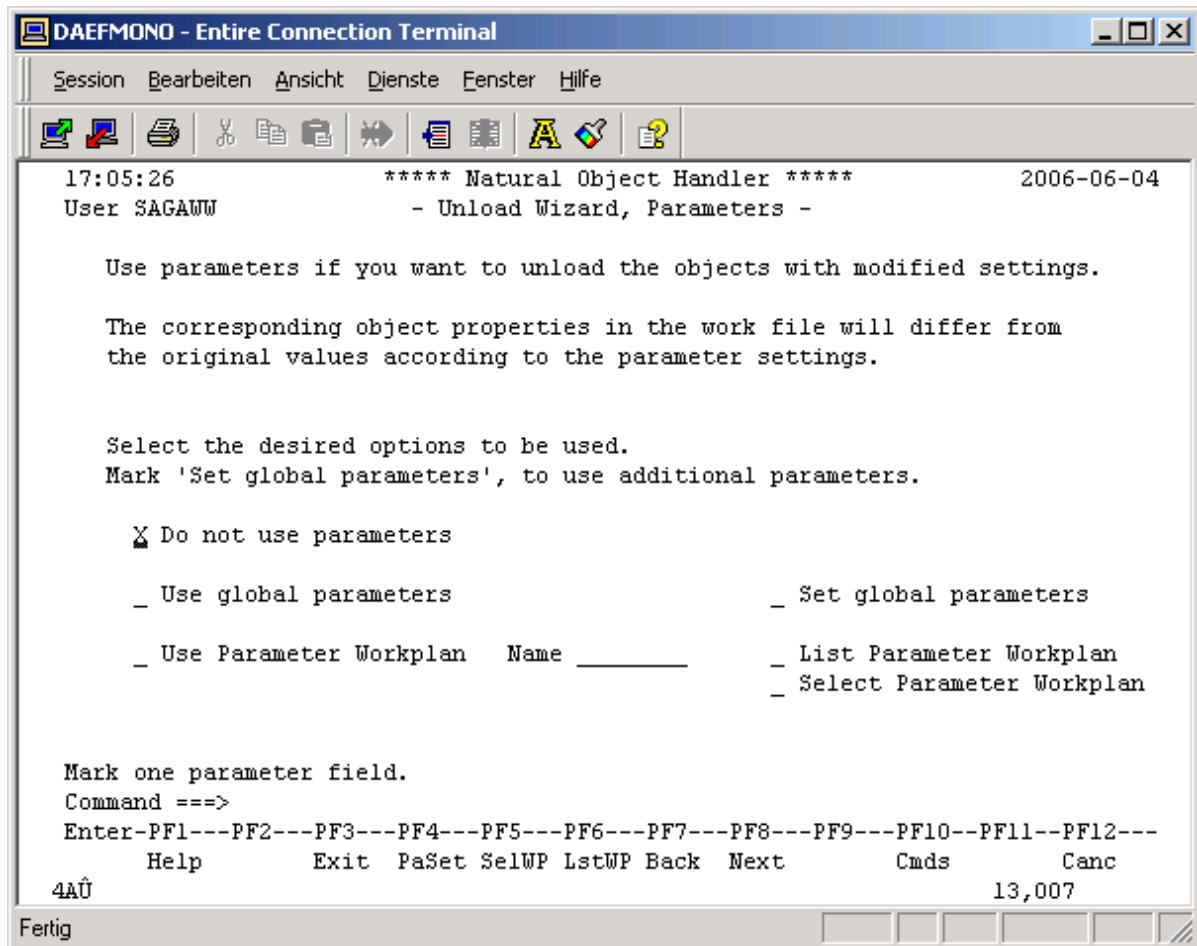
- Check "Set additional options" and press <ENTER>



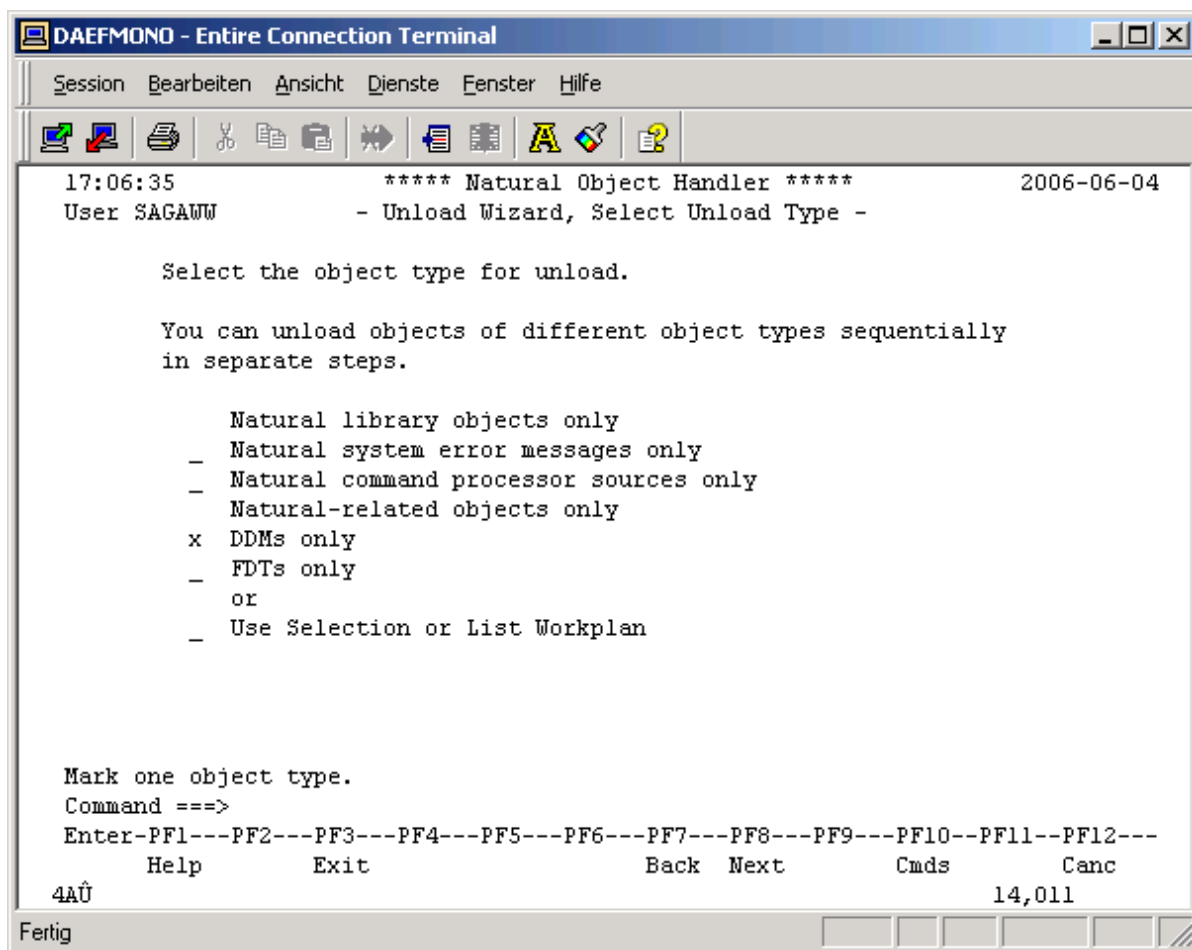
- Enter a "N" into the "Data area format", then press "ENTER"



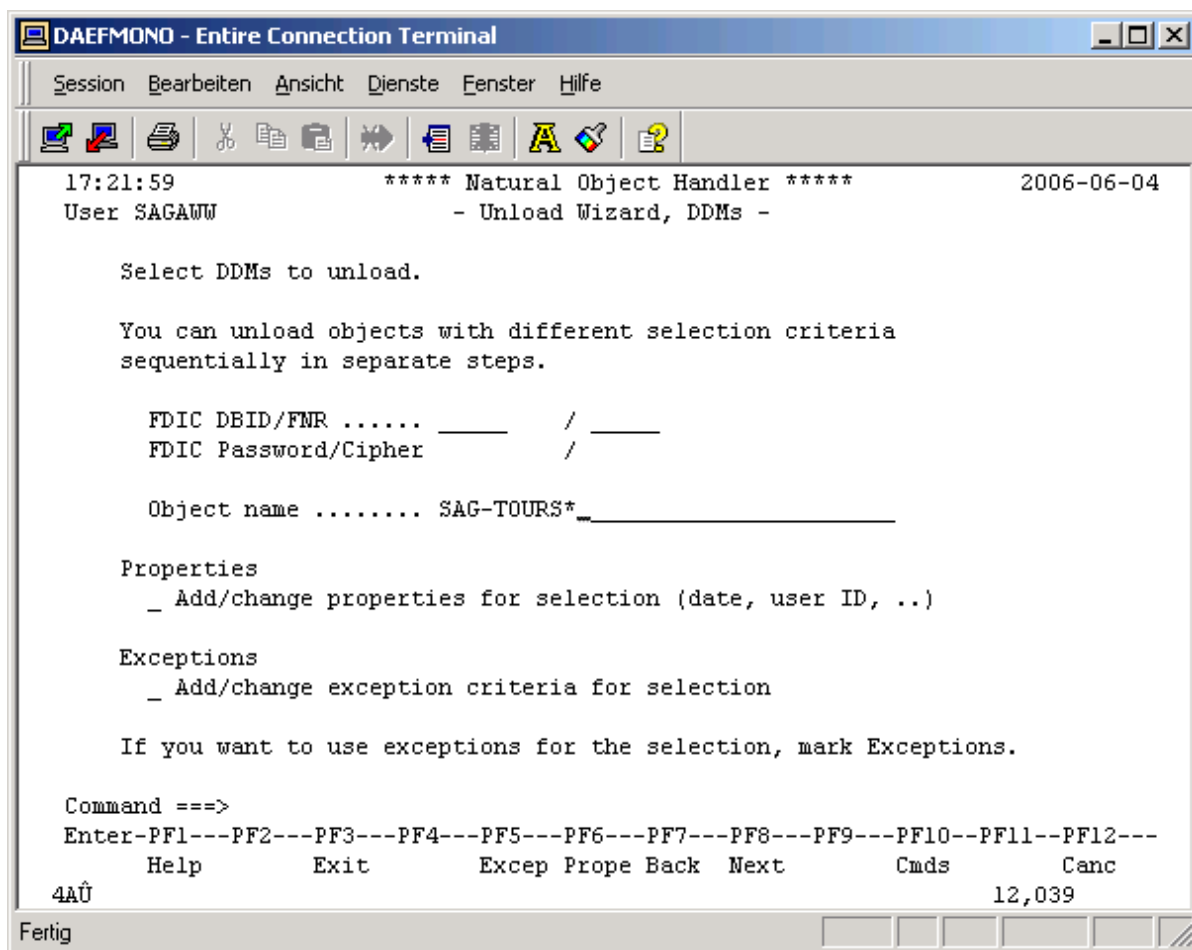
6. Select **Do not use parameters.**



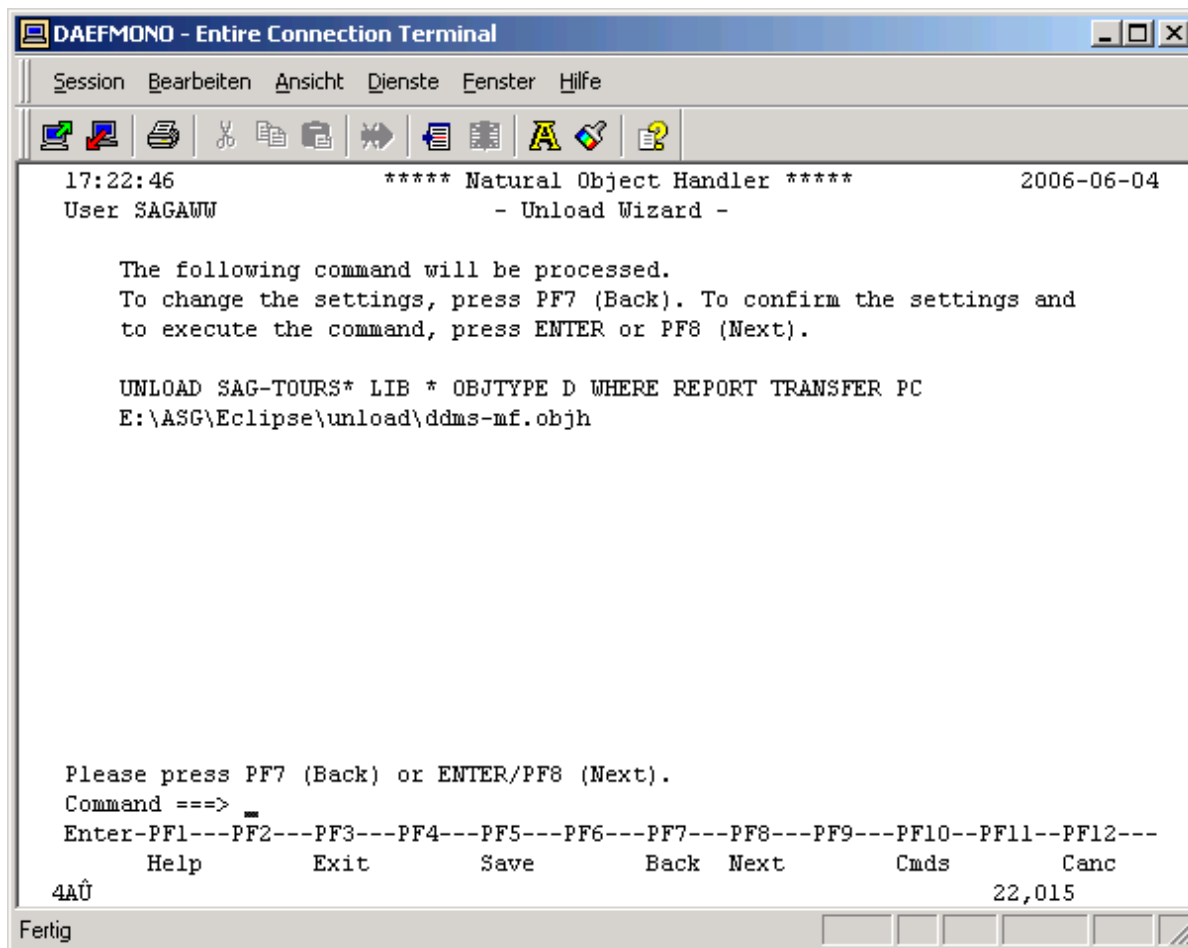
7. Select **DDMs** only.



8. Select the DDM(s) to be unloaded, optionally specify additional selection criteria to narrow the search.



- The generated Unload command is shown. Hit the Enter or PF8 key to start the actual unload process.



10. The status of the unload is shown. If it was successful, a file is created under the path and file name specified. Hit the **Enter** key to complete the unload, terminate the SYSOBJH wizard.

