

Control Center and server package update installation

The following will guide you through the process of updating your existing SOA Gateway Control Center and Server.

The SOA Gateway updates are provided via the Eclipse "Find and Install" wizard. When you update your Control Center (the "Base" feature), the updates are applied after the Find and Install process has finished, and the Eclipse IDE restarts.

Your SOA Gateway server will not be updated until you re-deploy the server.

- Using the Eclipse Update Manager to find and install updates
 - Update Server - Windows
 - Update Server - non-Windows Platforms
-

Using the Eclipse Update Manager to find and install updates

It is assumed that the SOA Gateway Control Center has already been installed, as detailed in the respective section of this installation guide.

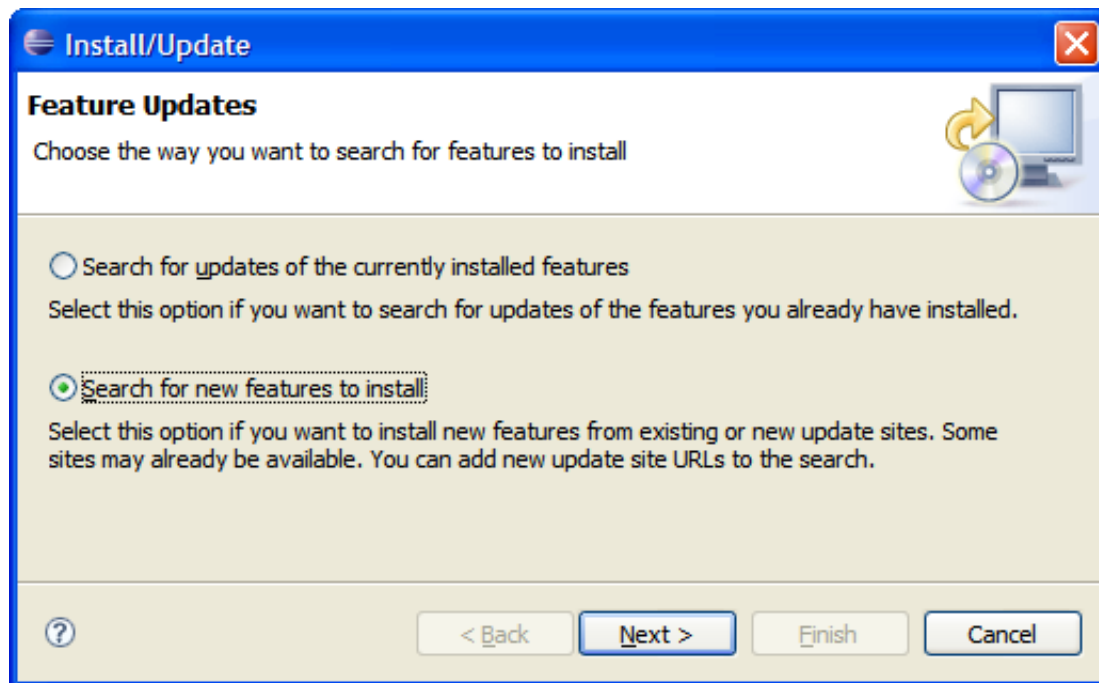
This section describes how to update the Control Center and also the server installation kit(s) to a level higher than the one currently installed

- Start the Update Manager, which can be found on the Eclipse main menu under **Help -> Software Updates -> Find and Install**.

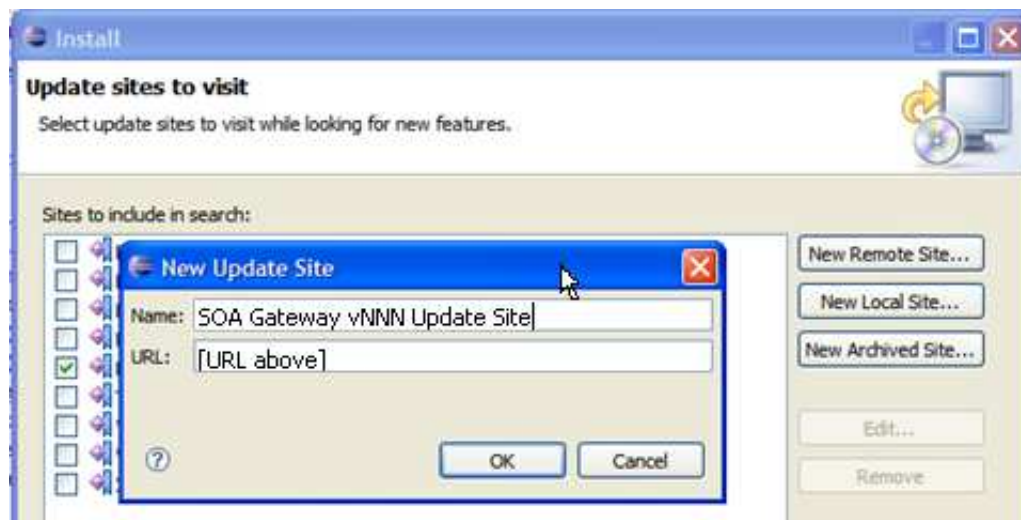
Note:

As the Eclipse Update Manager may need to get to an external site, you may have to specify a HTTP proxy in order to access it from an intranet. Instructions on how to set the HTTP proxy can be found in the Troubleshooting section.

- Select the '**Search for New Features to Install**' radio button.

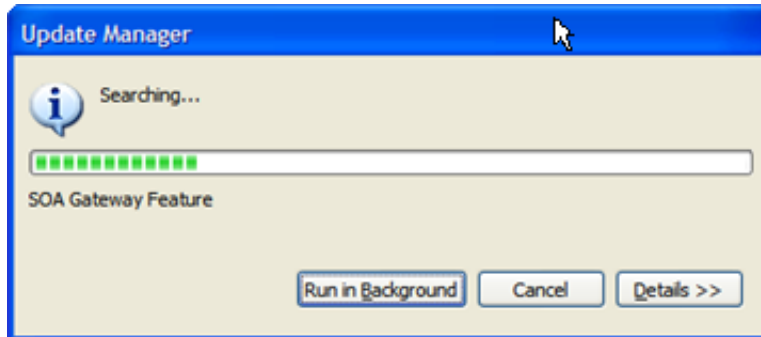


- Click **Next**
- Ensure the only site checked is the **SOA Gateway v411 Update Site** entry.
- If you do not have a **SOA Gateway v411 Update Site** site in the list, you need to create one. Click **New Remote Site** Button
- In the **Name** field, enter "SOA Gateway v411 Update Site"
- In the **URL** field, enter "http://www.risaris.com/eclipse/chileUpdateSite"

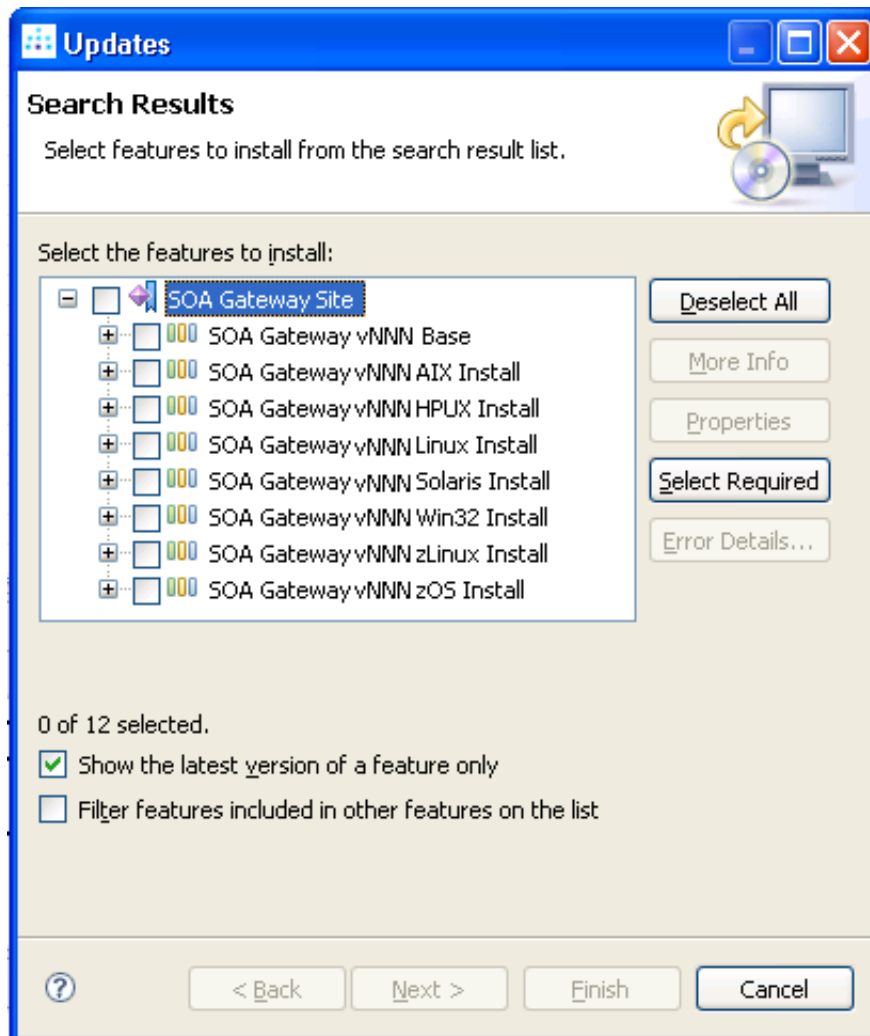


- Click **OK**

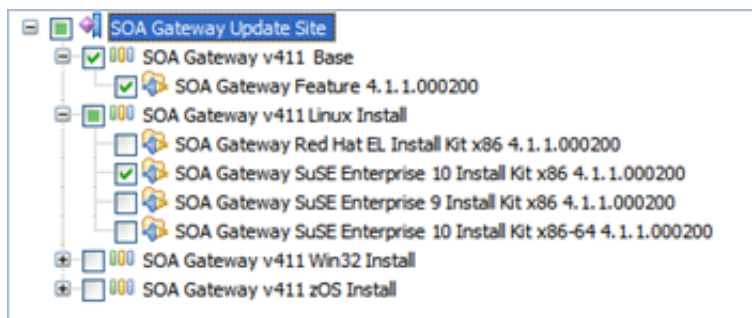
- Click **Finish**
- The Update Manager will now contact the update site, which may take considerable time, therefore a progress dialog is shown



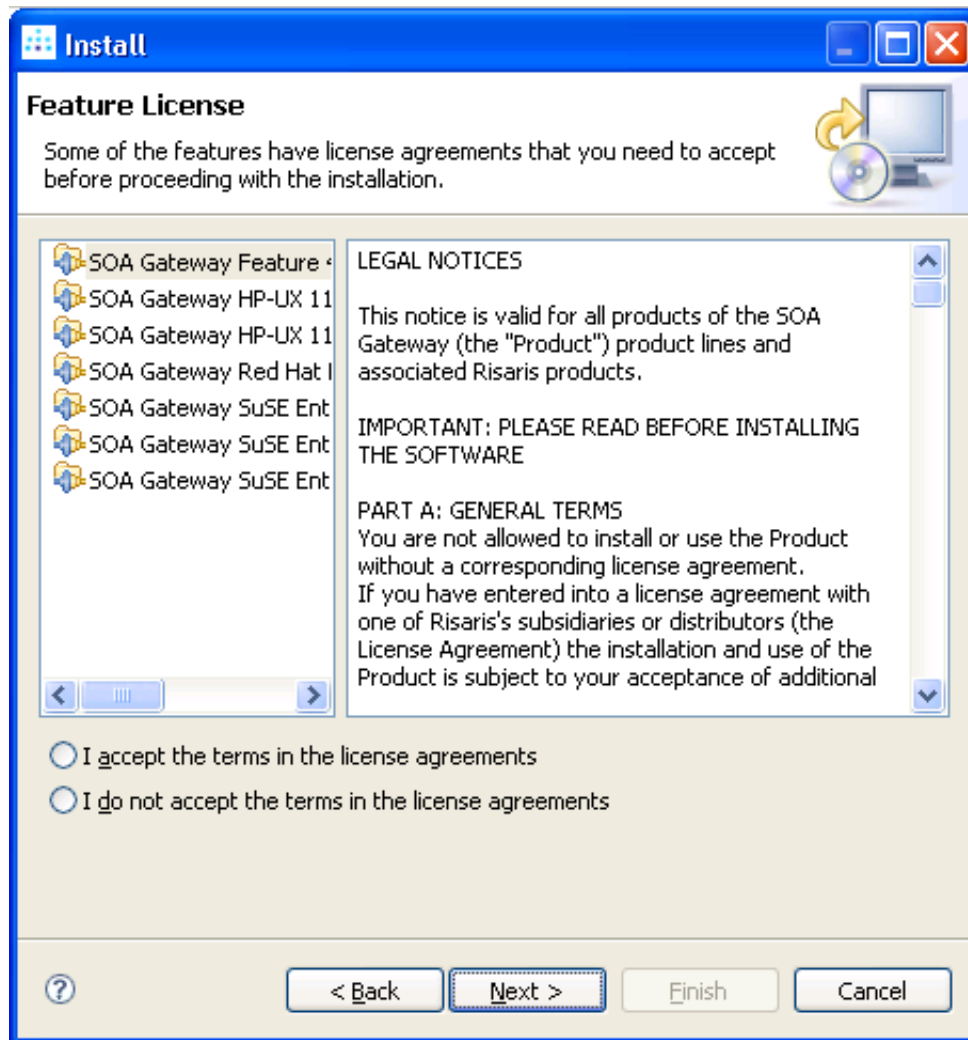
Once the search process is complete the update manager will display the list of available downloads. Click the + to expand the list.



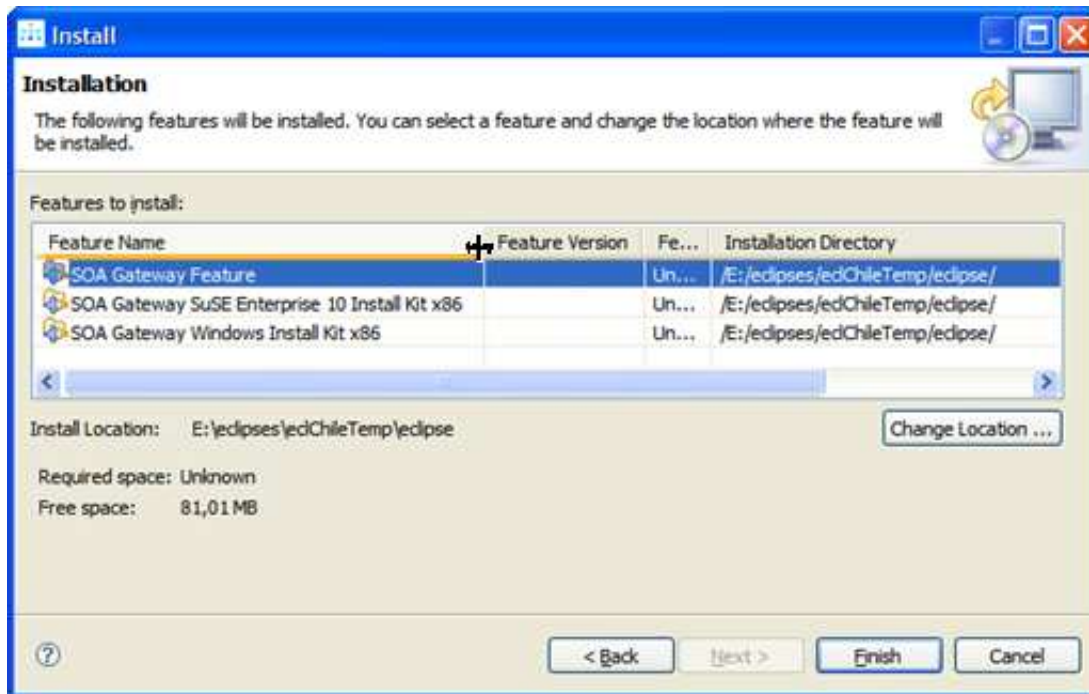
- It is recommended that you check the top-level **SOA Gateway Update Site** to receive all updates
- For Advanced Users
 - You should *always* ensure that the "Base" feature is checked.
 - An empty box next to the features name indicates that the feature is not selected
 - Choose a feature by clicking the checkbox beside it. A tick appears in the box beside the features
 - A square dot in the box indicates that some (but not all) of the kits available in this feature have been selected.
 - Select the install kit which corresponds to the system that will run the SOA Gateway Server
 - In some cases, you may also drill down by expanding the feature menu.
 - For example, you want to install on Linux, and your system is running Suse Linux Enterprise 10. Expand the **SOA Gateway Linux Install node**. Select the kit **SLE10 Install Kit**.



- Once finished, click **Next** and the required feature(s) will be downloaded.
- Depending on the amount of features selected, and the speed of your connection, this may take some time.
- Read and Accept the license agreement before continuing.

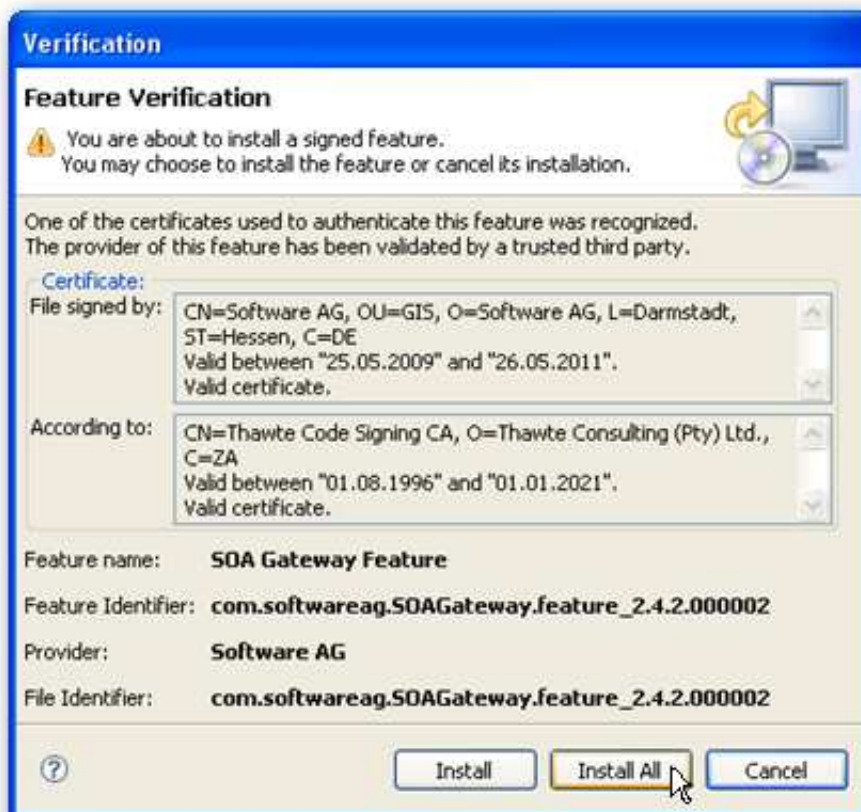


Check **I accept the terms in the license agreement** and click **Next**



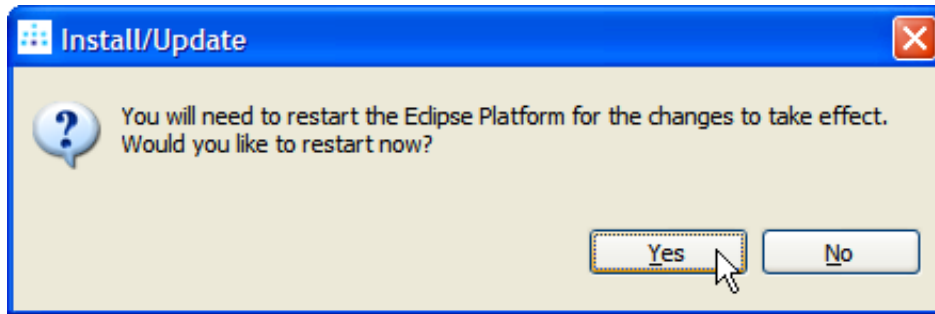
Review the features to be installed, and click **Finish**

- The selected features will now be installed.
- You will be asked to verify if the feature(s) to be installed are the ones you intend to install.



Click **Install All**

- You will be prompted to restart Eclipse.



Click **Yes**

If your current SOA Gateway server is running on Windows click [here](#) to continue the update

For all other platforms click [here](#) to continue the update

Update Server - Windows

If you followed the steps above, you now have successfully updated your Control Centre, and have downloaded the updated server installation files.

Important:

The SOA Gateway Server has not been changed at this stage. You need to re-deploy to update the server.

You must uninstall your existing SOA Gateway before continuing. The uninstall process will not uninstall your existing dataviews and schemas. You may want to make a backup of your existing configuration, and restore it once the new installation is complete.

Follow the instructions [here](#) to uninstall the SOA Gateway Server

Now restart the SOA Gateway deployment wizard, and follow the normal server installation process. See [here](#) for more details

Re-define your previous web services, and this completes the update.

Update Server - non-Windows Platforms

If you followed the steps above, you now have successfully updated your Control Center, and have downloaded the updated server installation files.

Important:

The SOA Gateway Server has not been changed at this stage. You need to re-deploy to update the server.

z/OS Update

You can run a new SOA Gateway server side-by-side with the existing server, so long as the datasets names and the port that the server listens on are different.

Alternatively, you can re-deploy a new server, and simply use the new LOAD library in the STEPLIB of your existing installation.

Follow the instructions here to deploy the updated server.

Important:

Ensure you choose new dataset names.

*nix Platforms

You can run a new SOA Gateway server side-by-side with the existing server, so long as the installation location and server port are different.

Alternatively, you can transfer the updated installation files, and provide the *-update* option when starting the *installServer.sh* script.

Follow the instructions here.

Important:

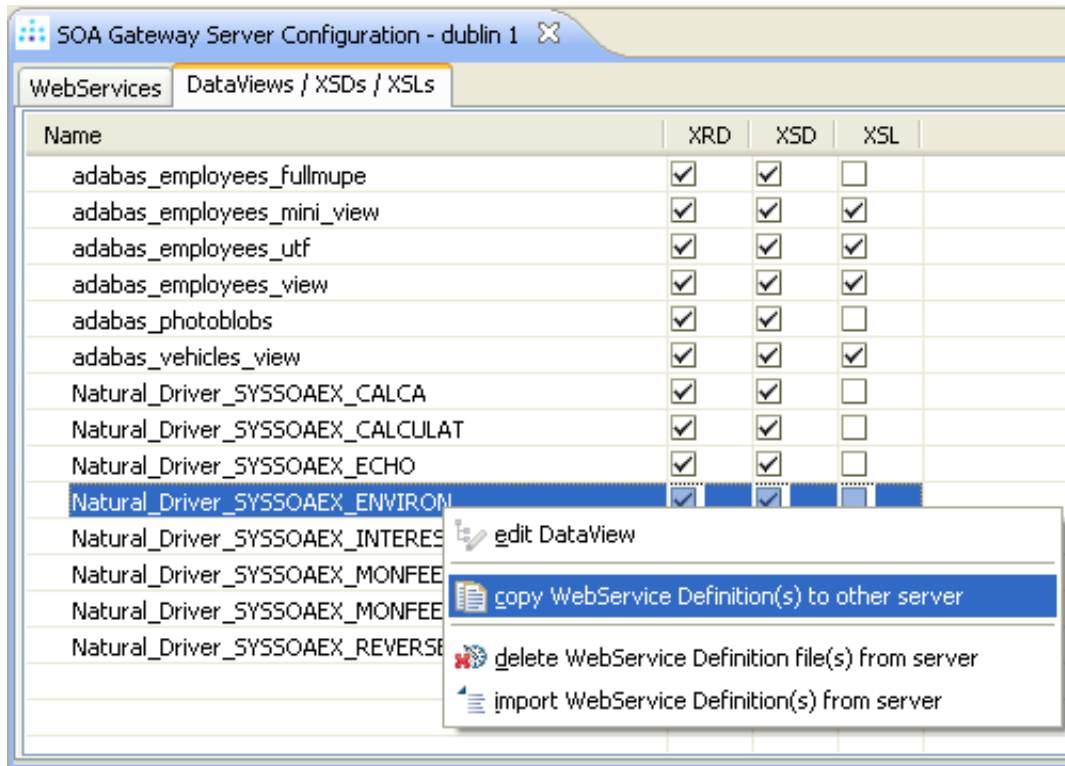
If you want to create a new installation, ensure you choose a new installation directory, and a server port different from the existing.

If you have updated an existing installation, then the update is now complete.

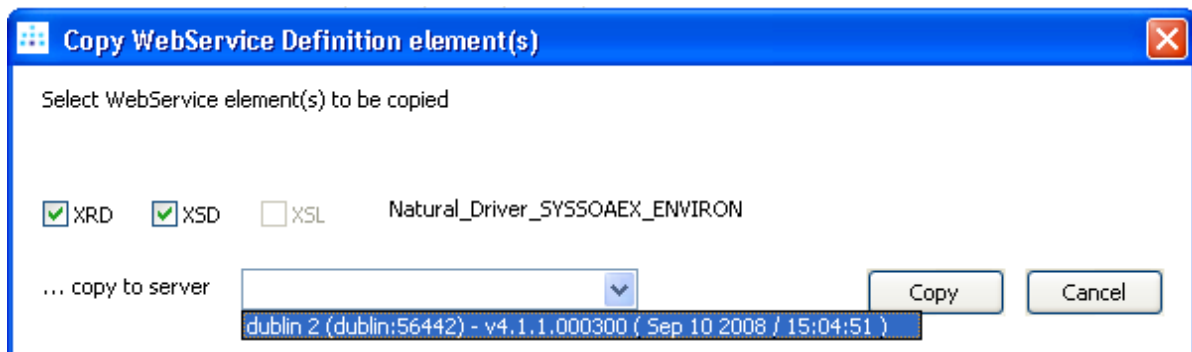
If you have created a new installation, you will need to copy the web services to your updated server. Follow the instructions below to do this.

Copy the dataview and schemas from the "old" server to the "new" one.

- From the Configuration View, select the **DataViews / XSDs/ XSLs** tab.
- Right click on the files you want to copy, and select **copy Web Service Definition to other server**.



- Select the "new" server entry from the drop-down box.



This will copy the required files to the updated server.

- You can now re-create the web services on the new server, by dragging and dropping them from the OLD to NEW.

